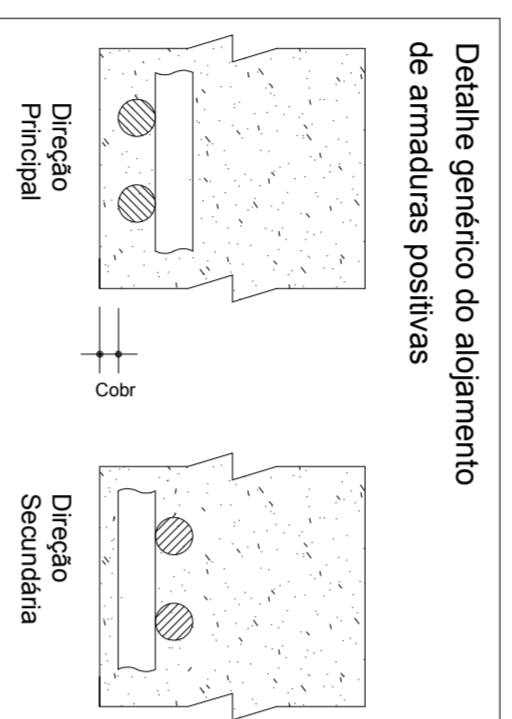
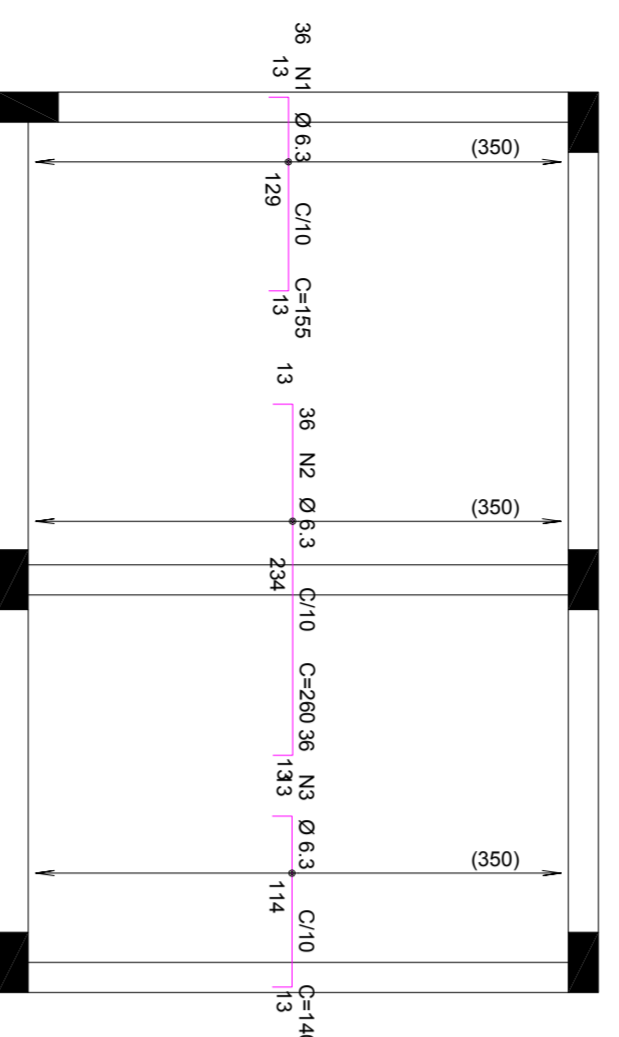


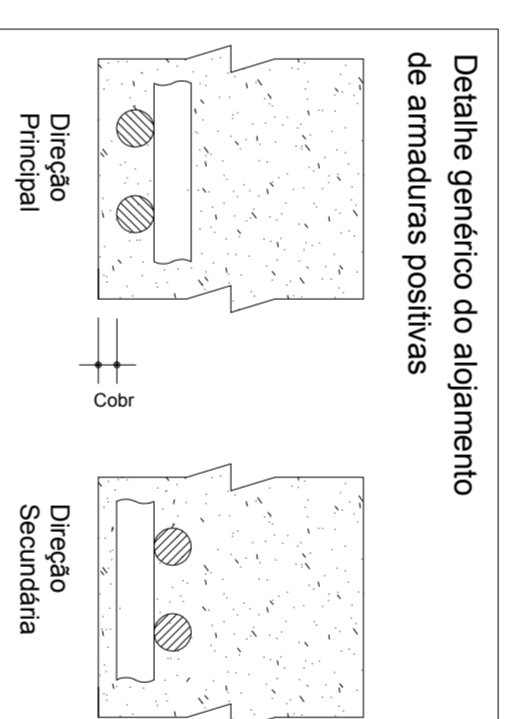
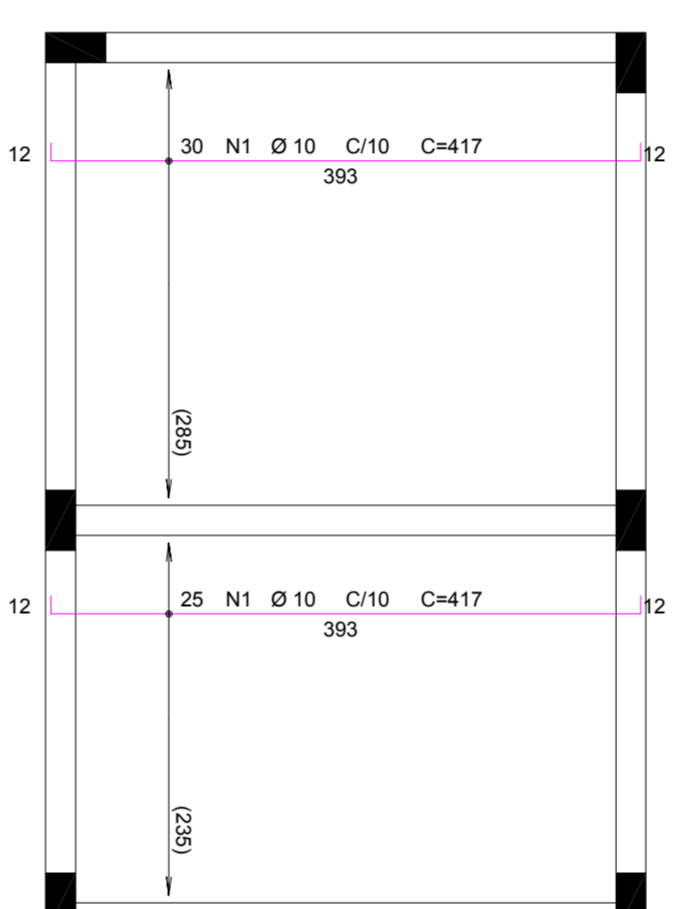
Reservatorio - Armadura negativa horizontal

Esc: 1/50



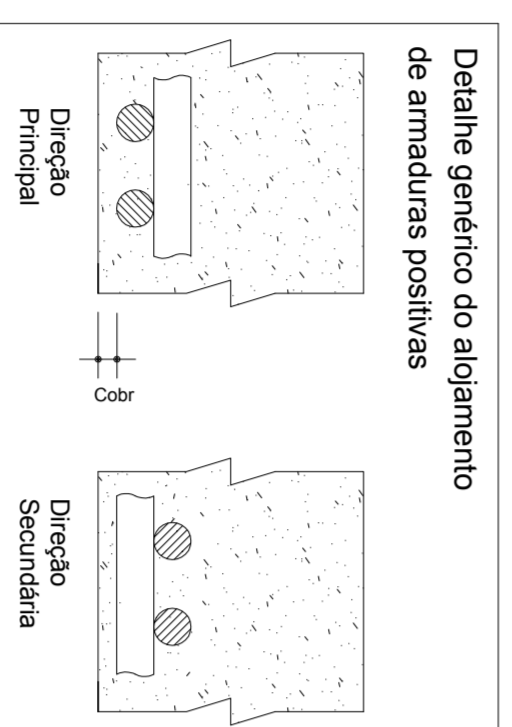
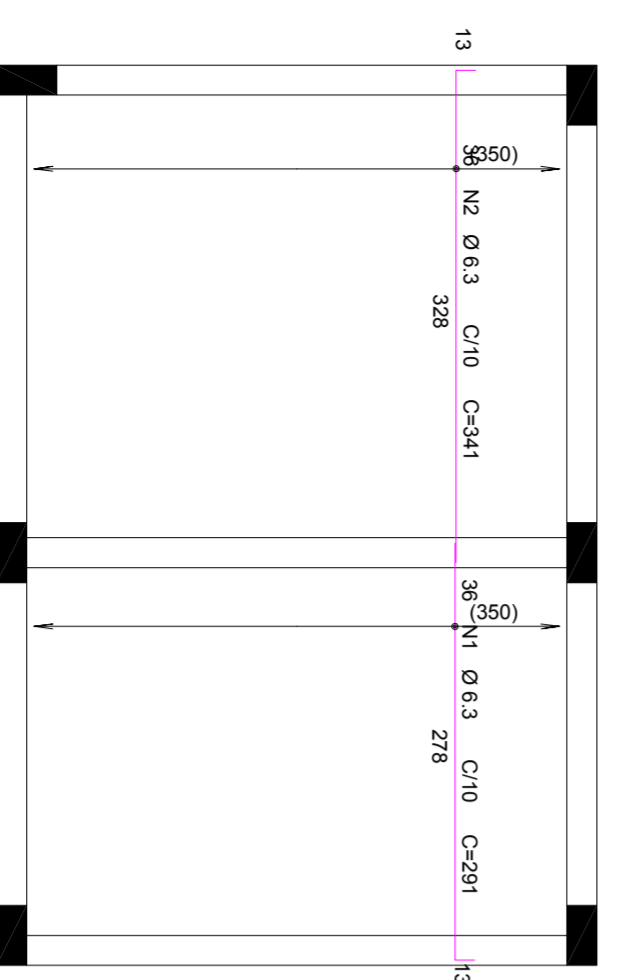
Reservatorio - Armadura positiva vertical

Esc: 1/50



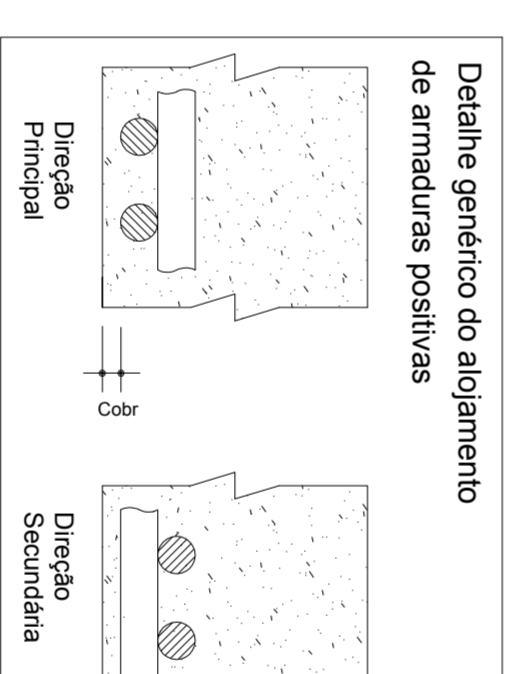
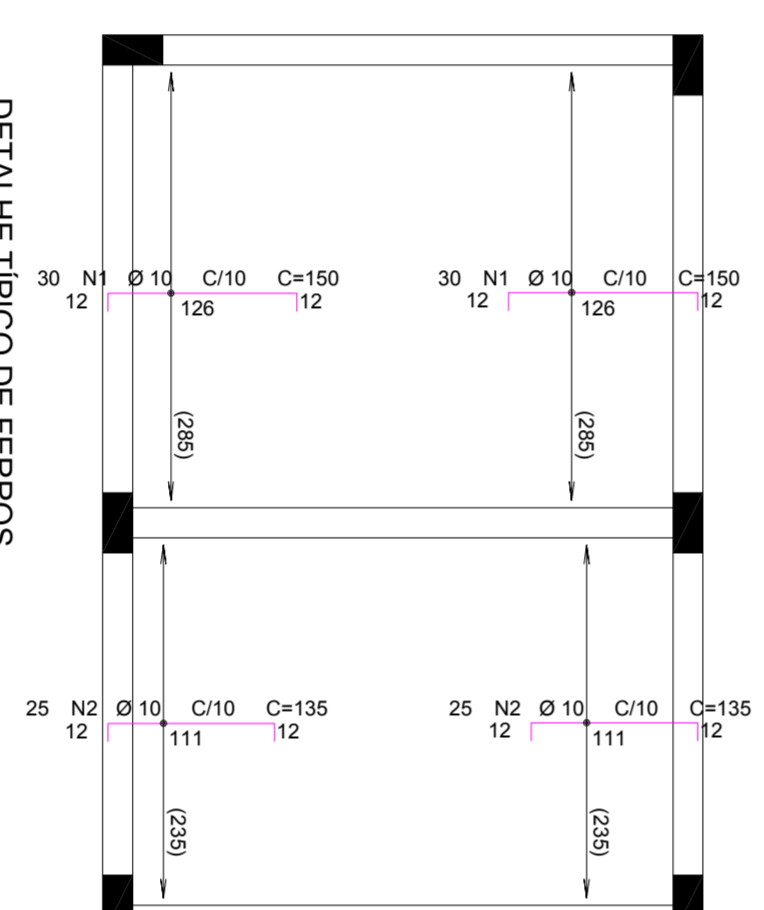
Reservatorio - Armadura positiva horizontal

Esc: 1/50



Reservatorio - Armadura negativa vertical

Esc: 1/50




ACO	POS	BIT (mm)	QUANT	COMPIMENTO UNIT (cm)	TOTAL (cm)
Reservatorio - Armadura negativa horizontal					
50A	1	6.3	36	155	5580
50A	2	6.3	36	230	5280
50A	3	6.3	36	230	5280
60B	4	6.3	1	-COBR-	6660
60B	5	6.3	1	-COBR-	6660
Reservatorio - Armadura negativa vertical					
50A	1	10	60	150	9000
50A	2	10	50	135	6750
Reservatorio - Armadura positiva horizontal					
50A	1	6.3	291	201	10426
50A	2	6.3	36	341	12276
Reservatorio - Armadura positiva vertical					
50A	1	10	55	417	22955

RESUMO AÇO CA 50-60					
ACO	BIT (mm)	COMPR (m)	PESO (kg)	COMPR (m)	PESO (kg)
60B	6.3	67	11	11	11
50A	6.3	497	11	497	214
50A	10	367	11	367	214
Peso Total 60B =					11 kg
Peso Total 50A =					351 kg

ATENÇÃO

- 1-É OBRIGATORIA A EXECUÇÃO NA CAPA DE TODOS OS PAINÉIS DE LAJES PRÉ-FABRICADAS, MALHA NEGATIVA DE 06 C25cm;
- 2-NO DIMENSIONAMENTO DAS LAJES PRÉ-FABRICADAS, NÃO CONSIDERÁ-LAS ENGASTADAS NAS VIGAS DE APOIO
- 3-EXIGIR DO FABRICANTE, O PROJETO DA LAJE PRÉ-FABRICADA



PROJETO ESTRUTURAL

PREFEITURA MUNICIPAL DE MATINHOS

UNIDADE DE PRONTO ATENDIMENTO 24H

OPERA N.º 0001

DESE N.º 50/53

REV. N.º 00

CLIENTE	OPERA	CALCULISTA	PROJETA	DATA
PREFEITURA MUNICIPAL DE MATINHOS	UNIDADE DE PRONTO ATENDIMENTO 24H	MARCEL ZASSNER ROMERO FARINHA CREA 172025/PR	PREFEITURA MUNICIPAL DE MATINHOS CNPJ 06.919.748/0001-95	07/01/2014
TITULO	OPERA N.º	DESENHO	ESCALA	
Reservatorio - Armadura negativa horizontal Reservatorio - Armadura positiva horizontal Reservatorio - Armadura positiva vertical	0001	ENG MARCEL FARINHA	30MPa	