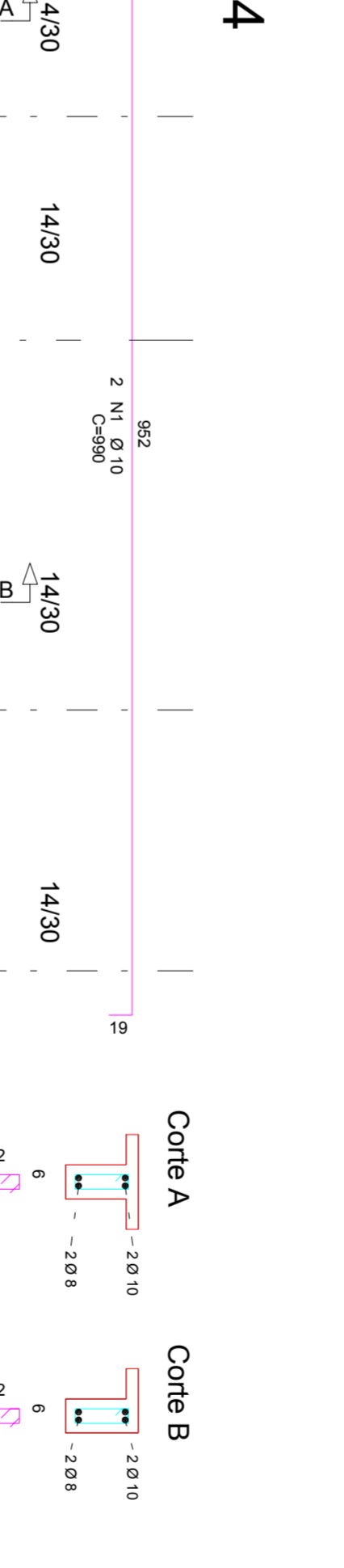
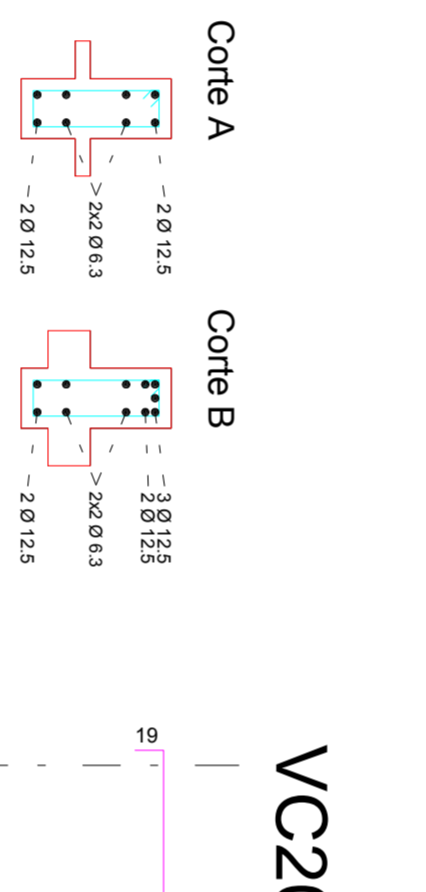
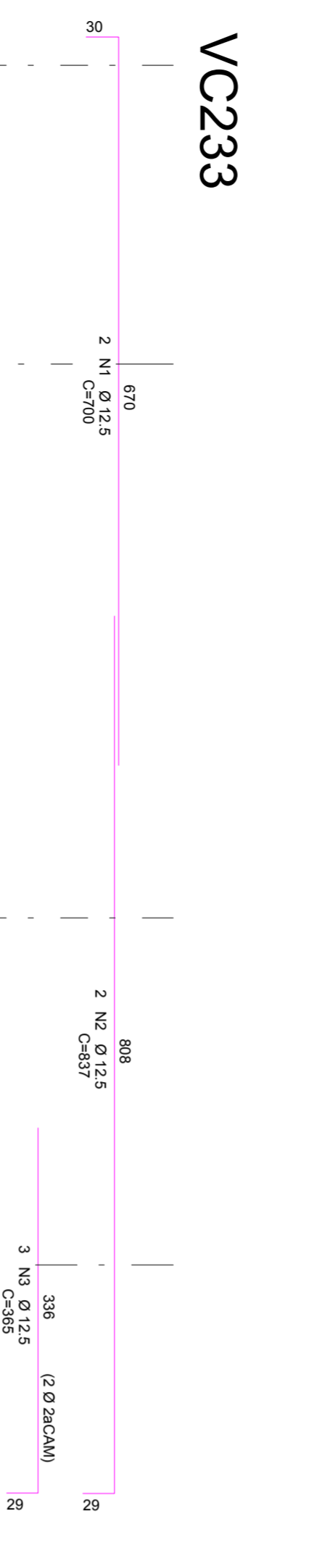
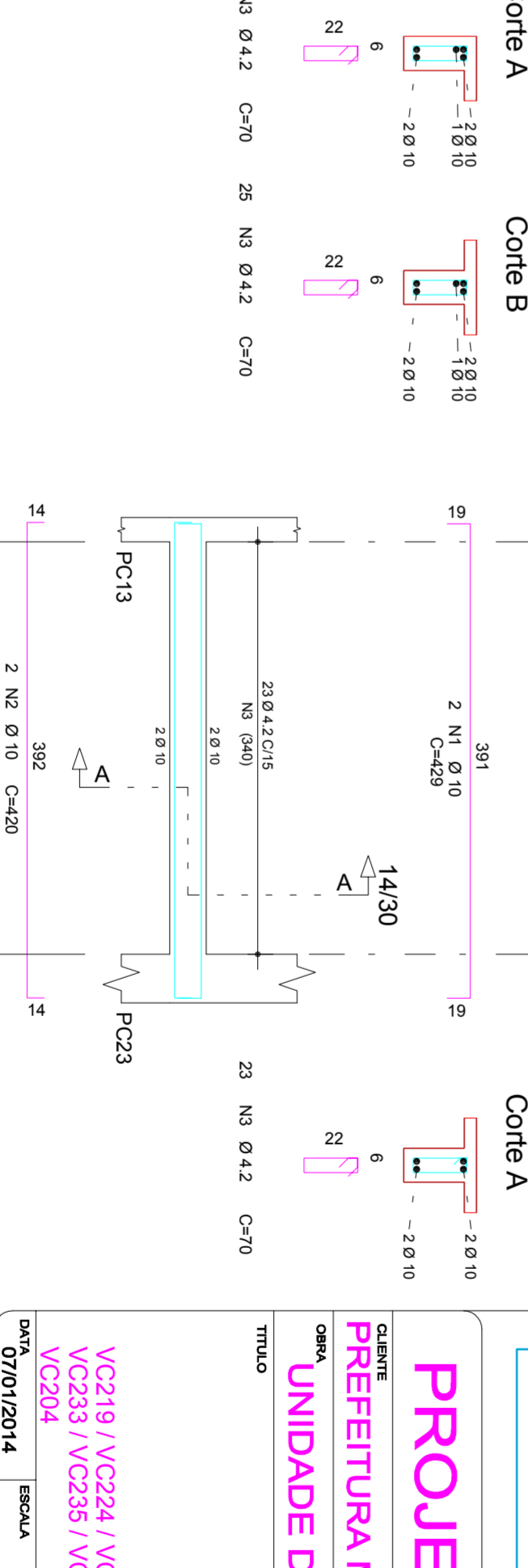
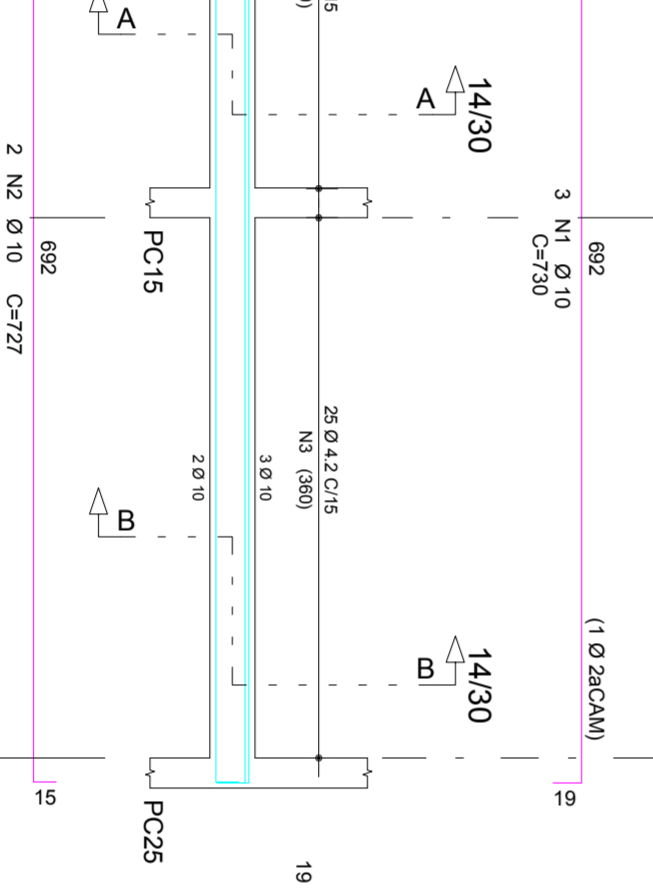
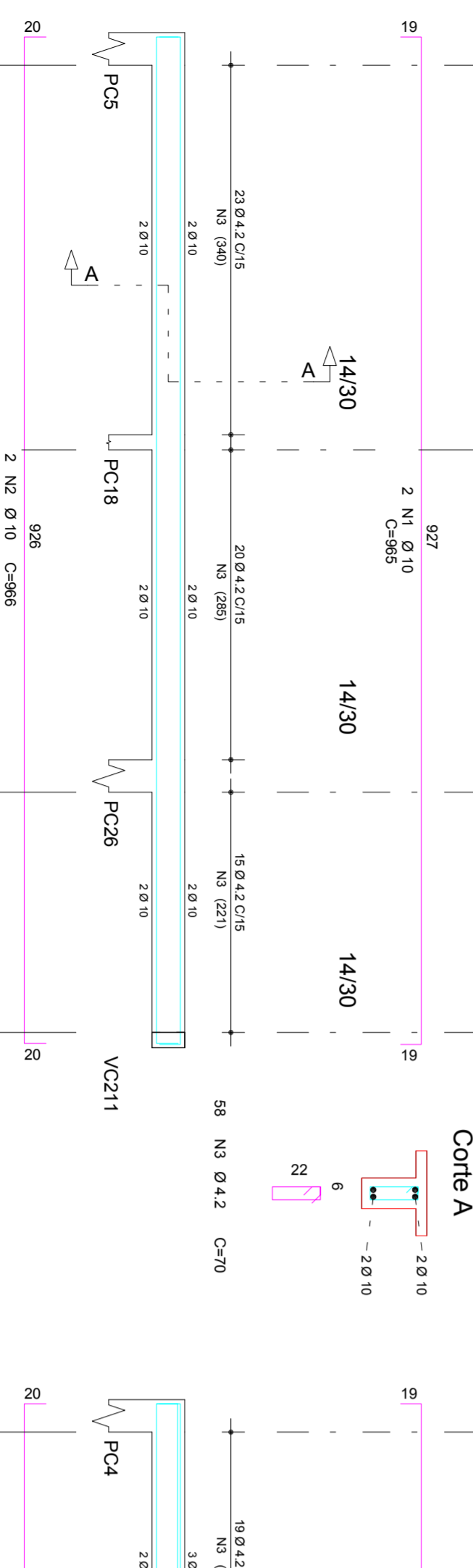
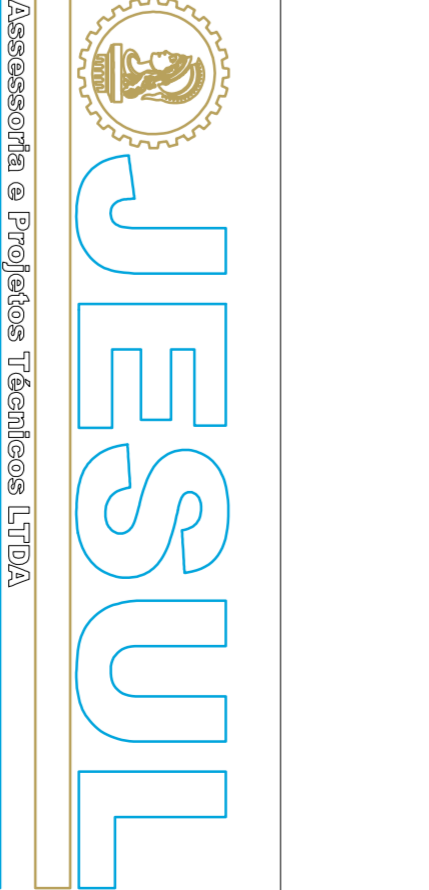
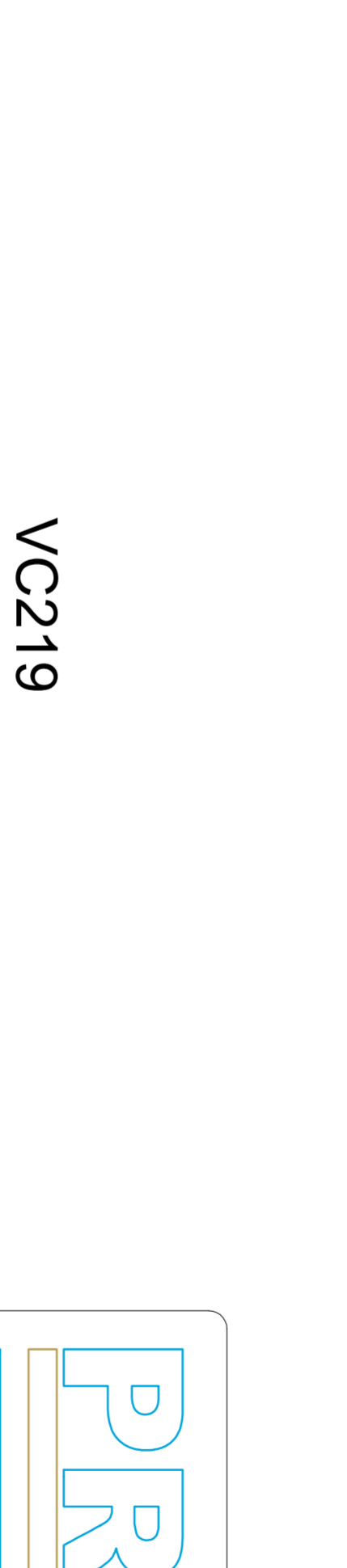
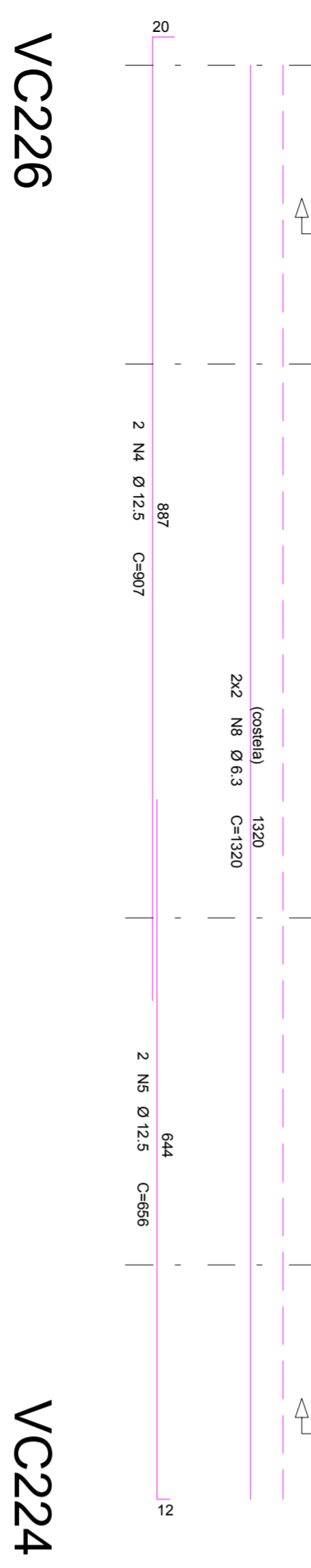
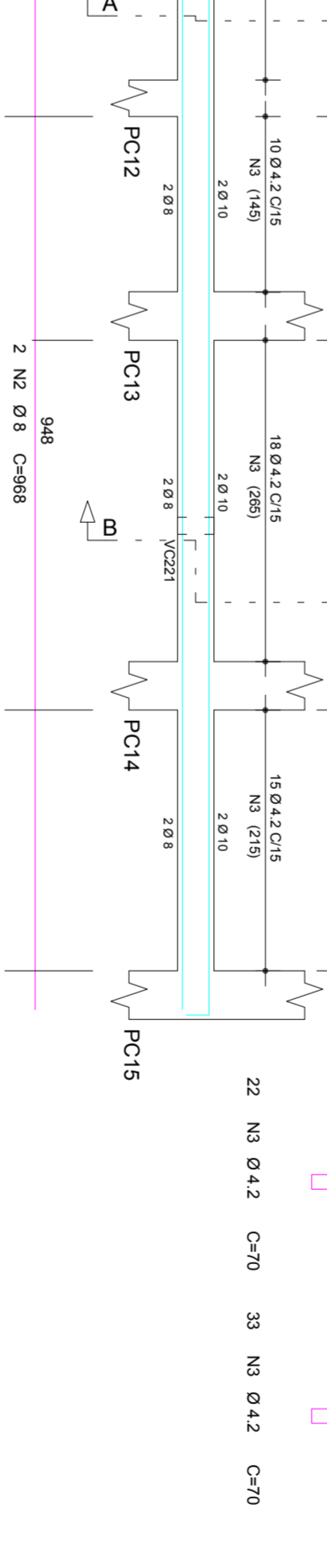
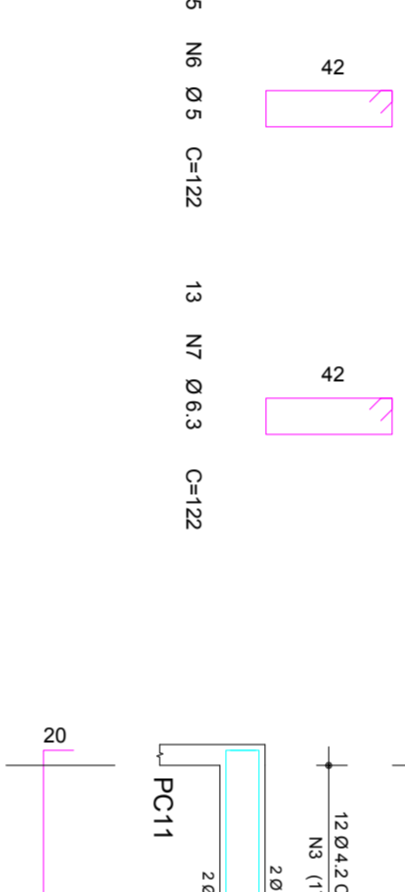
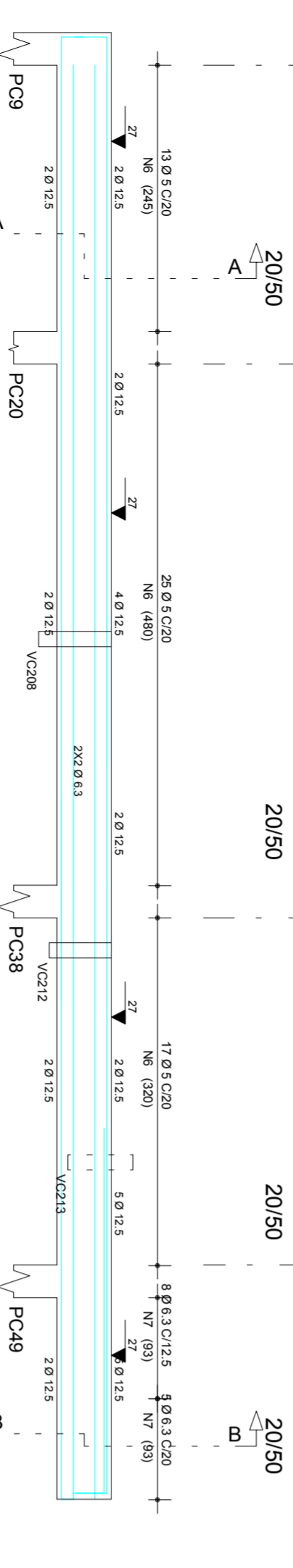


AÇO	POS	BIT (mm)	QUANT	COMPLEMENTO	UNIT	COMPRIMENTO (cm)	TOTAL
VC204	50A	1	10	2	980	1980	
	50A	2	8	2	988	1986	
	60B	3	4.2	55	3850	16300	
VC219	50A	1	10	2	420	868	
	50A	2	10	2	420	868	
	60B	3	4.2	23	70	1610	
VC224	50A	1	10	2	730	2160	
	60B	2	10	2	770	1540	
	50A	3	4.2	44	70	3080	
VC226	50A	1	10	2	985	1980	
	50A	2	10	2	986	1982	
	50A	3	4.2	58	70	4050	
VC233	50A	1	12.5	2	700	1400	
	50A	2	12.5	2	817	1634	
	50A	3	4.2	2	305	1085	
VC235	50A	1	12.5	2	639	1278	
	50A	2	12.5	2	928	1856	
	50A	3	4.2	2	470	940	
VC236	50A	1	10	3	645	1935	
	60B	2	10	3	130	480	
	50A	5	6.3	6	610	2980	



RESUMO AÇO CA 50-60				PESO
AÇO	BIT	COMPR	(m)	(kg)
60B	4	187	30	30
50A	5	171	43	43
50A	8	151	37	37
50A	12.5	143	140	140
Peso Total 60B =				59 kg
Peso Total 50A =				337 kg



PR JESUL
Engenharia e Projetos Técnicos Ltda.

PROJETO ESTRUTURAL
PREFEITURA MUNICIPAL DE MATINHOS
UNIDADE DE PRONTO ATENDIMENTO 24H

CLIENTE: PREFEITURA MUNICIPAL DE MATINHOS
CLIENTE: PREFEITURA MUNICIPAL DE MATINHOS
CLIENTE: PREFEITURA MUNICIPAL DE MATINHOS

TÍTULO: UNIDADE DE PRONTO ATENDIMENTO 24H

CALCULISTA: MARCEL CESAR FERREIRO FARINHA
CREA: 179202/O-PR

REVISOR: ENG. MARCEL FARINHA

DATA: 07/01/2014

ESCALA: 30MPa

ORÇ. N.º: 00011

DESE. N.º: 39/53

REV. N.º: 00