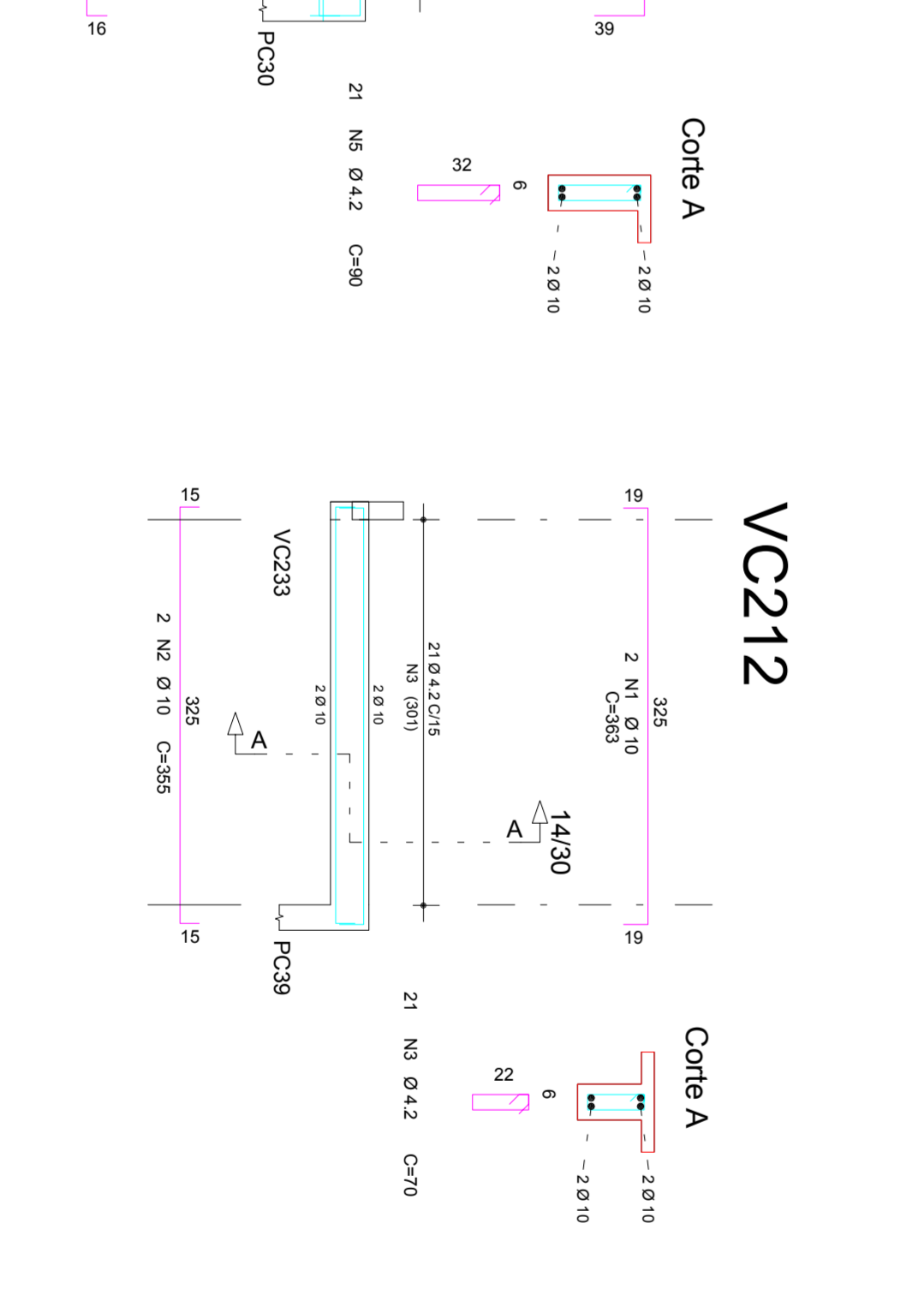
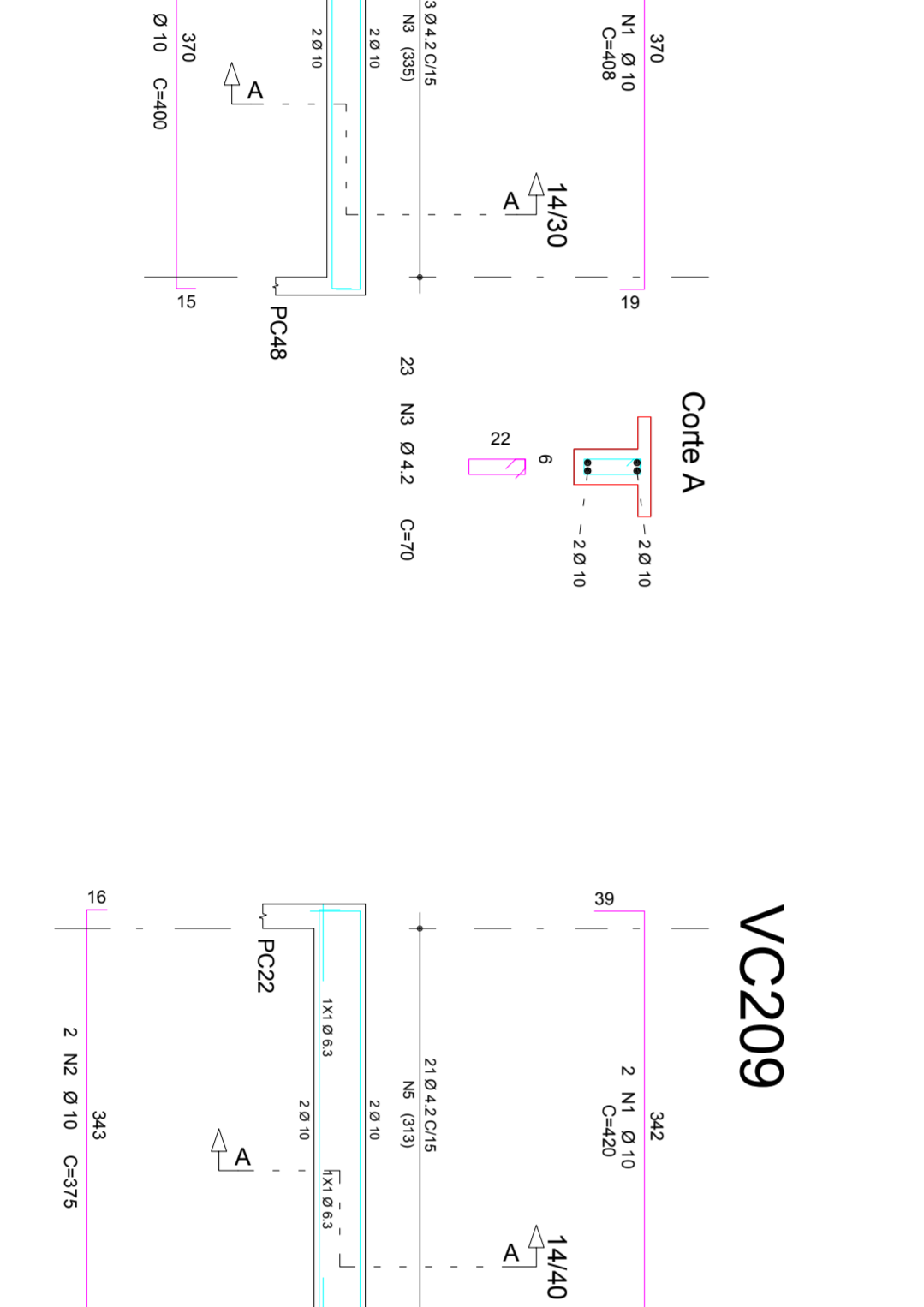
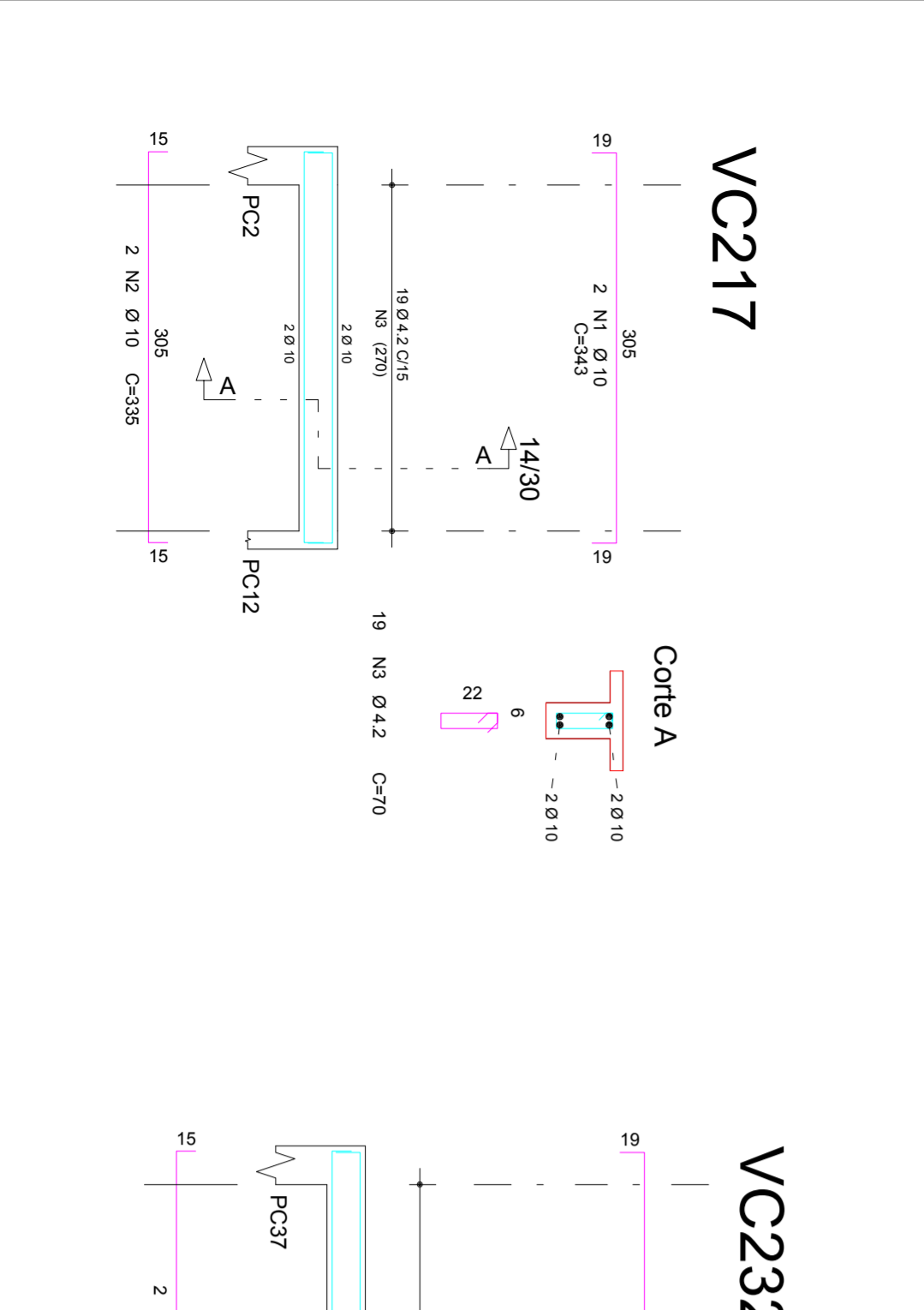
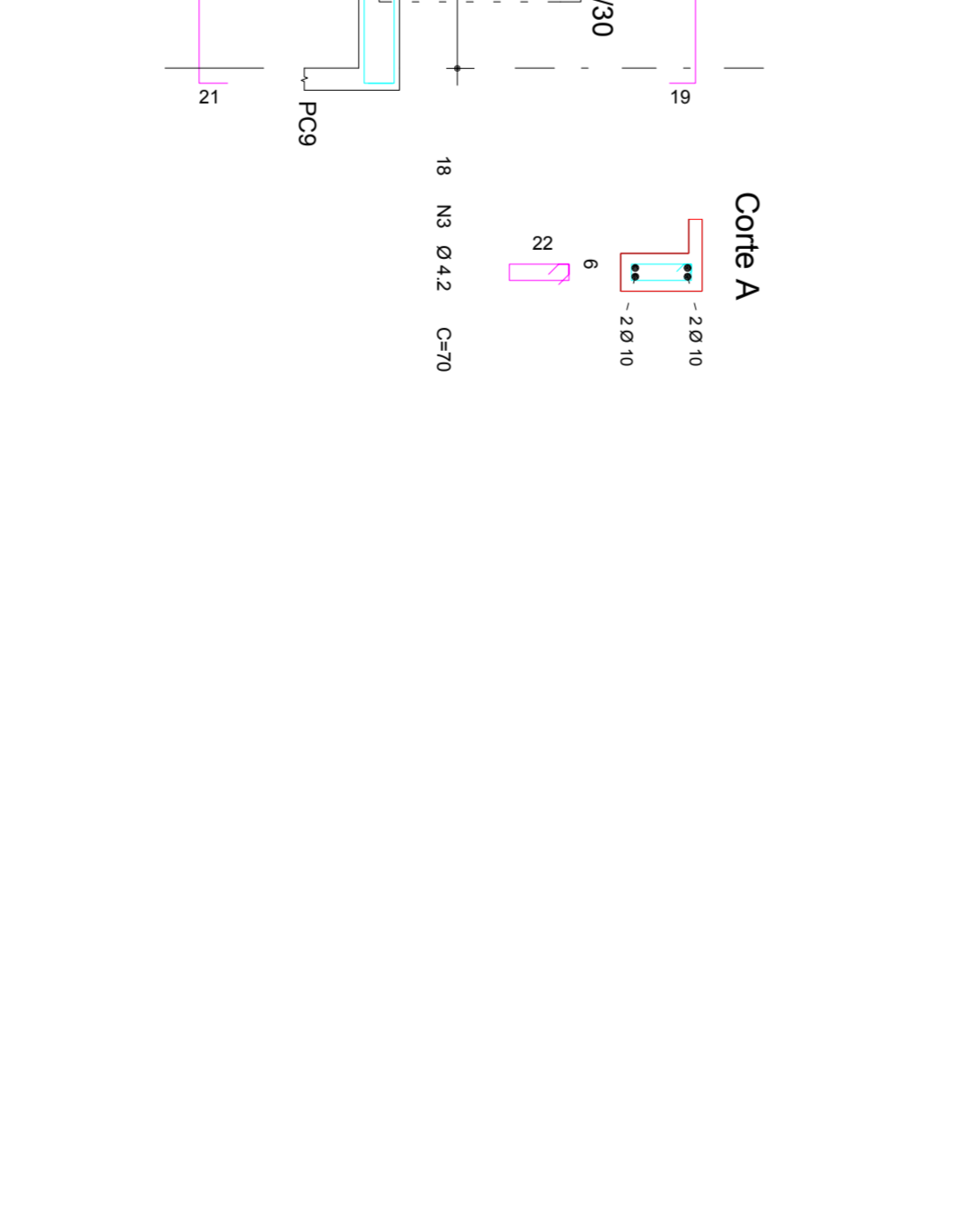
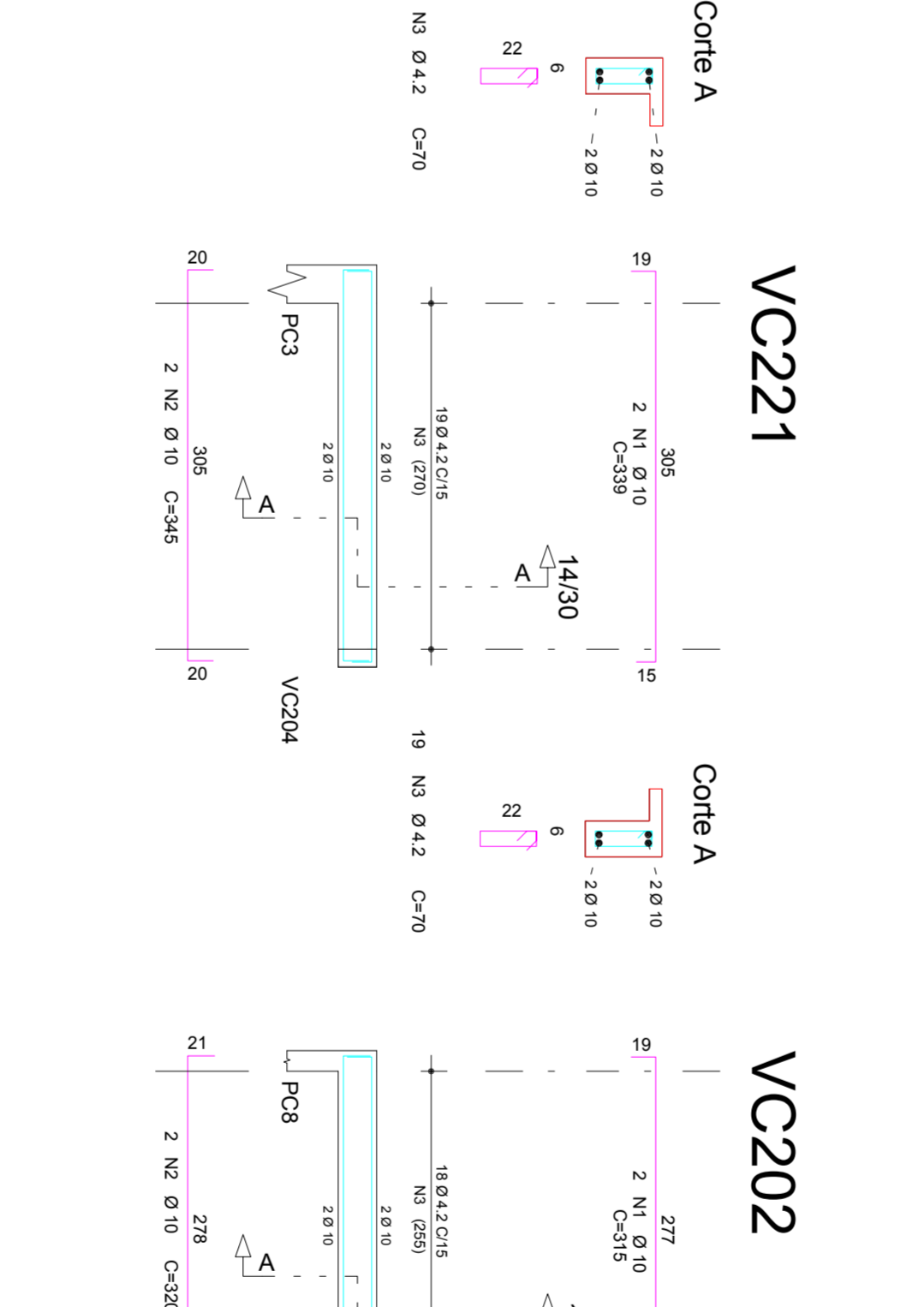
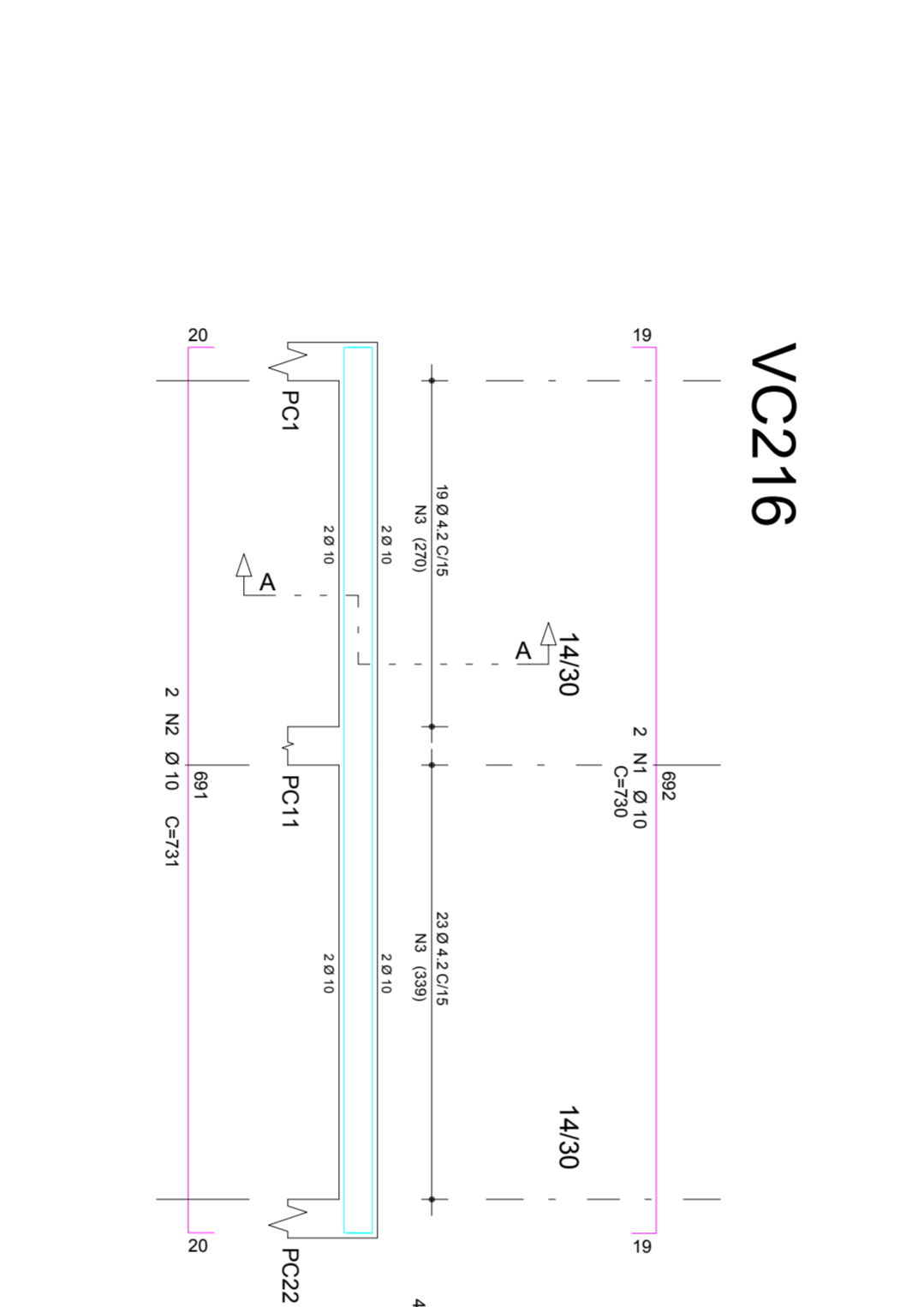
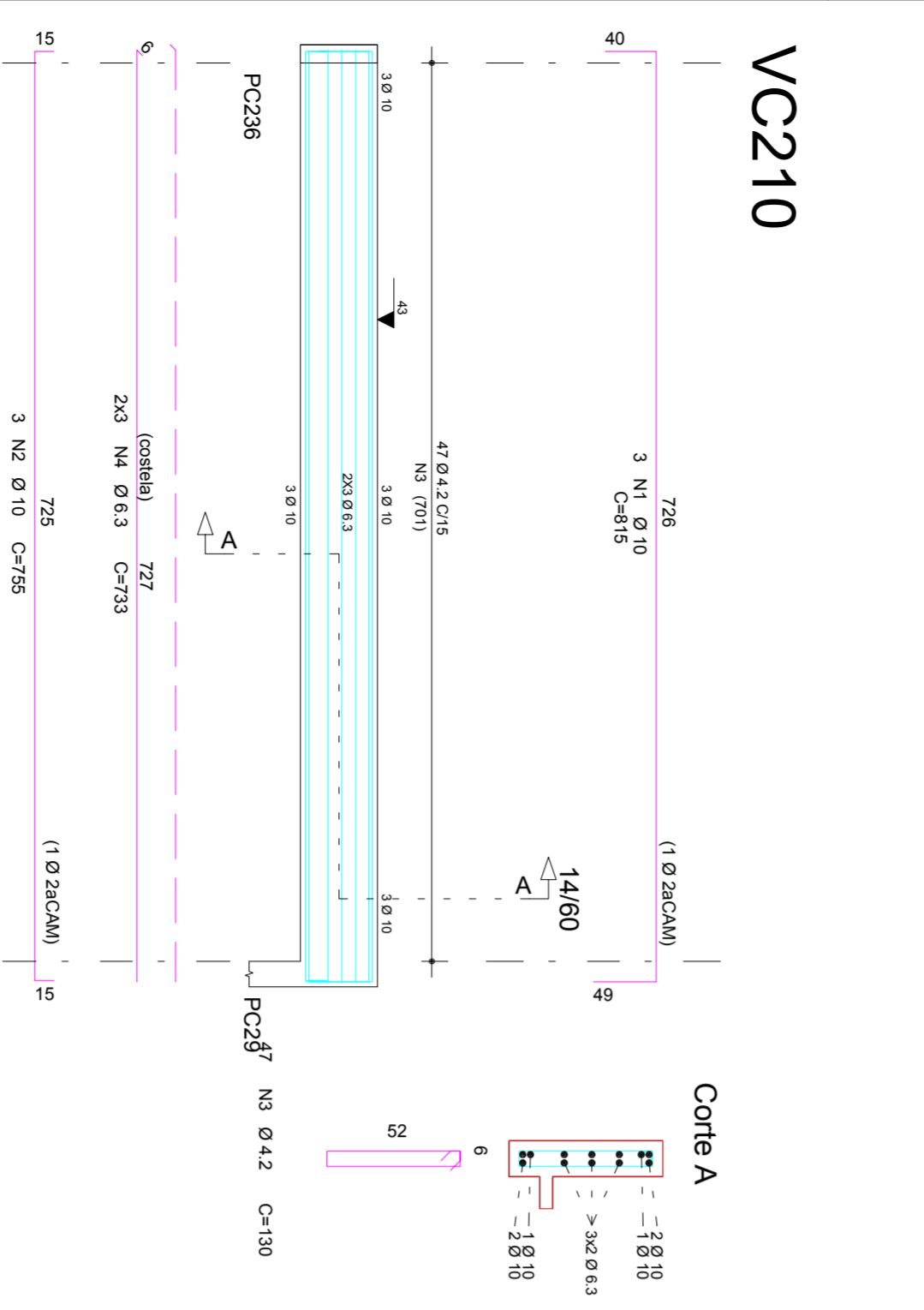


ACO	POS	BIT (mm)	QUANT	COMPRIMENTO (cm)	PESO (kg)
VC205	50A	1	10	3	601
VC205	60B	3	4,2	35	600
VC209	50A	1	10	2	420
VC209	50A	2	10	2	375
VC210	50A	4	6,3	83	600
VC210	60B	5	4,2	21	90
VC216	50A	1	10	3	815
VC216	50A	2	4,2	27	2605
VC216	50A	4	6,3	6	739
VC218	50A	1	10	2	730
VC218	50B	2	4,2	42	1450
VC218	50A	2	10	2	615
VC220	50A	1	10	2	335
VC220	50A	2	4,2	2	670
VC220	50A	3	10	2	1180
VC220	50A	4	6,3	10	900
VC222	50A	1	10	2	614
VC222	50A	2	10	2	330
VC222	60B	4	5	27	90
VC227	50A	1	10	2	615
VC227	50A	2	10	2	345
VC227	50A	3	10	2	590
VC227	50A	4	5	28	50
VC229	50A	1	10	2	617
VC229	50A	2	10	2	720
VC229	50A	3	10	2	994
VC229	50A	4	6,3	11	90
VC232	50A	1	10	2	408
VC232	50A	2	10	2	400
VC232	50B	2	4,2	23	150
Peso Total	60B =				241 kg

ACO	BIT (mm)	COMPR	PESO (kg)
60B	4,2	228	25
60B	6,3	64	16
50A	8	4	23
50A	10	354	23
Peso Total	60B =		42 kg
Peso Total	50A =		241 kg





**PR JESUL**

Assessoria e Projetos Técnicos LTDA

**PROJETO ESTRUTURAL**

**PREFEITURA MUNICIPAL DE MATINHOS**

**UNIDADE DE PRONTO ATENDIMENTO 24H**

CLIENTE: PREFEITURA MUNICIPAL DE MATINHOS

ORÇÃO: UNIDADE DE PRONTO ATENDIMENTO 24H

TÍTULO: VC205 / VC209 / VC210 / VC216 / VC218 / VC220 / VC225 / VC227 / VC229 / VC232

CALCULISTA: MARCEL ASSUNÇÃO ROMERO FARINHA

PROJETADEIRO: ENG MARCEL FARINHA

DATA: 07/01/2014

ISSUUA

FOR: 30MPa

DISSIMULO: ENG MARCEL FARINHA

ORÇÃO N.º **0001**

DATA N.º **41/53**

REV. N.º **00**