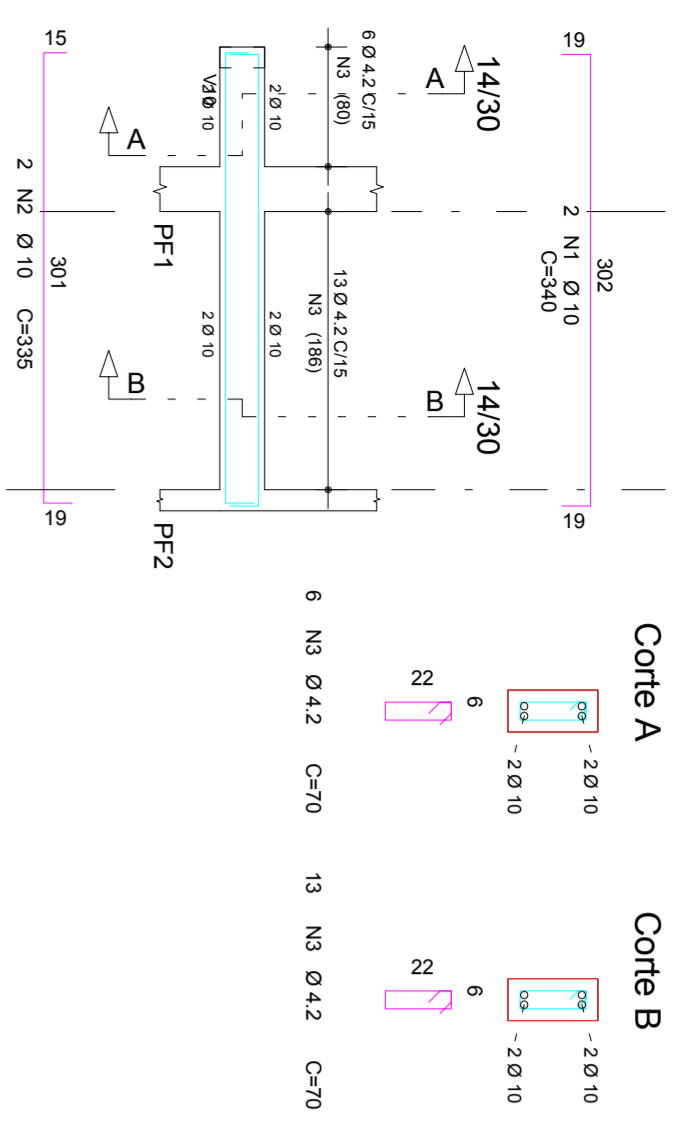
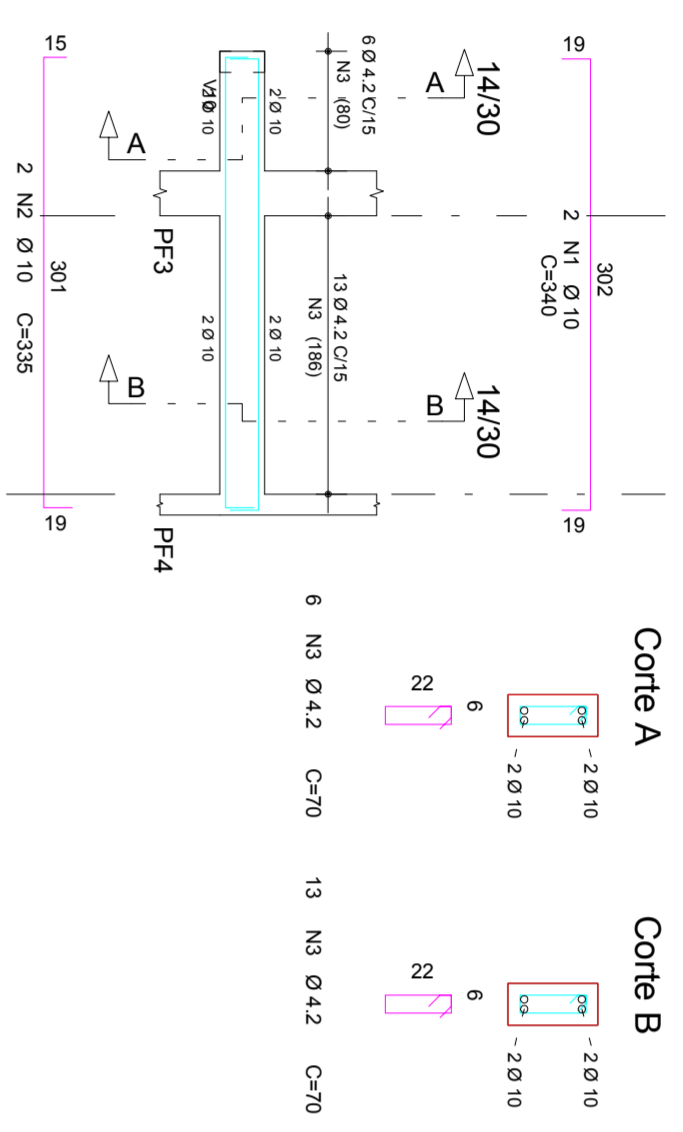


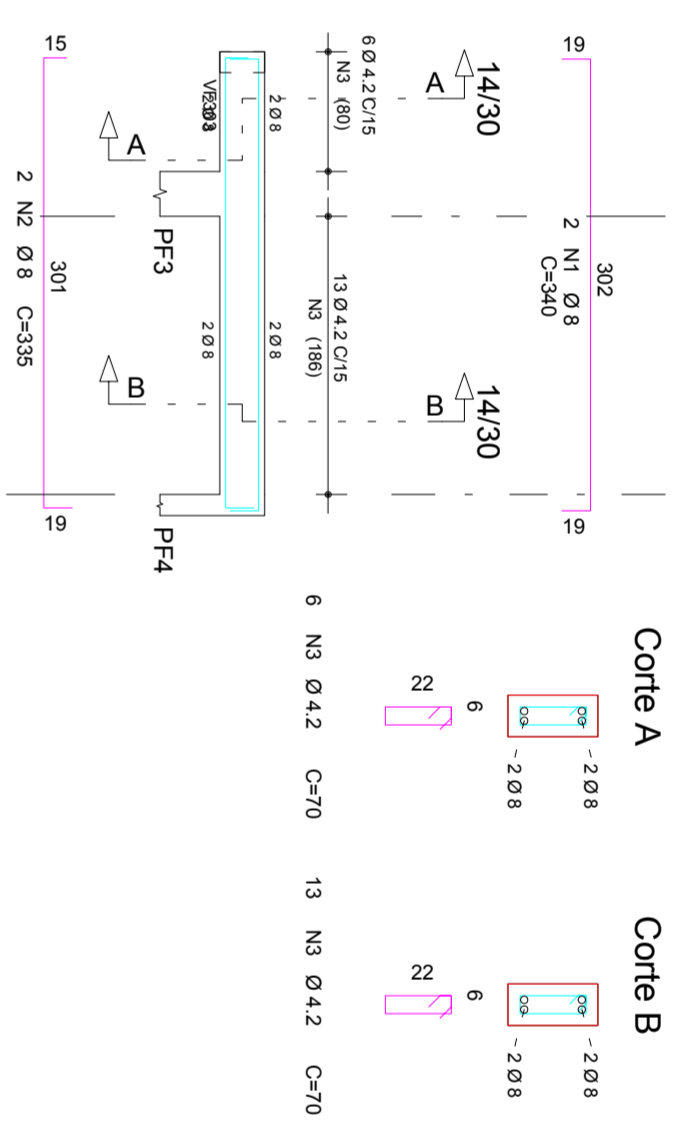
VF201



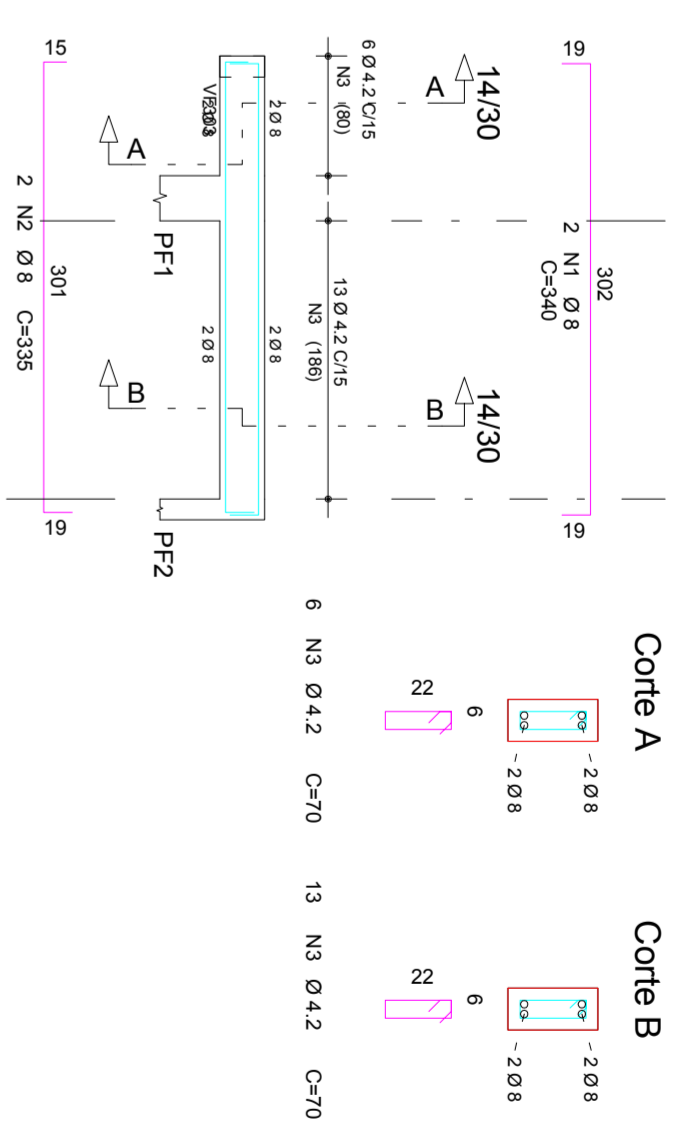
VF202



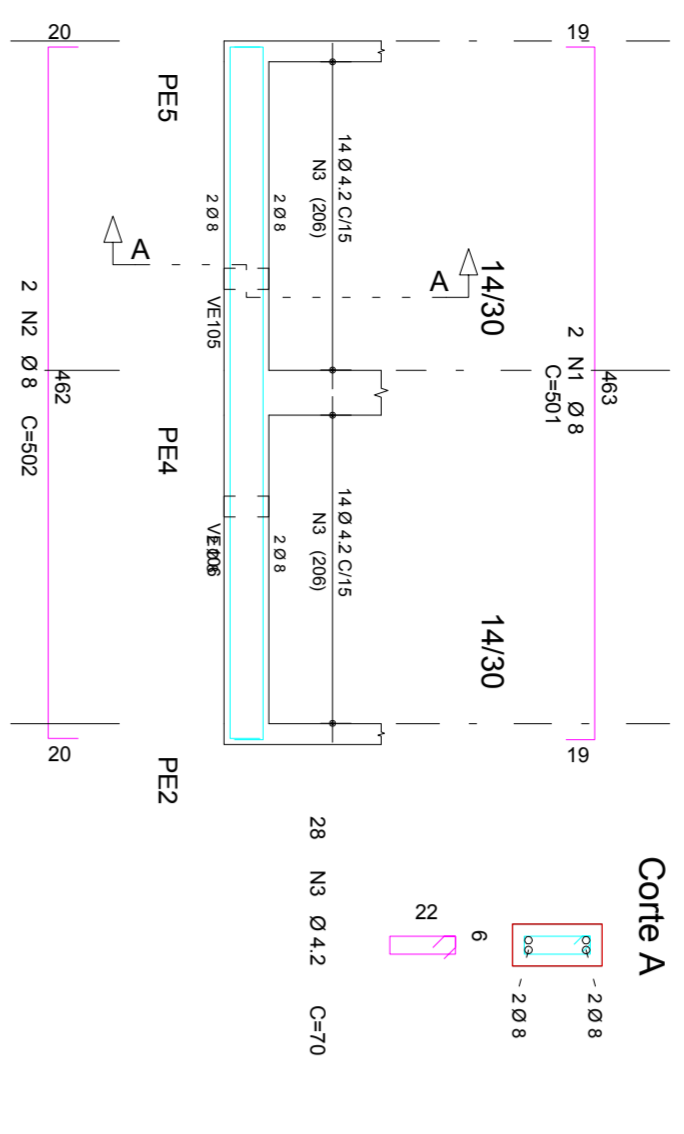
VF302



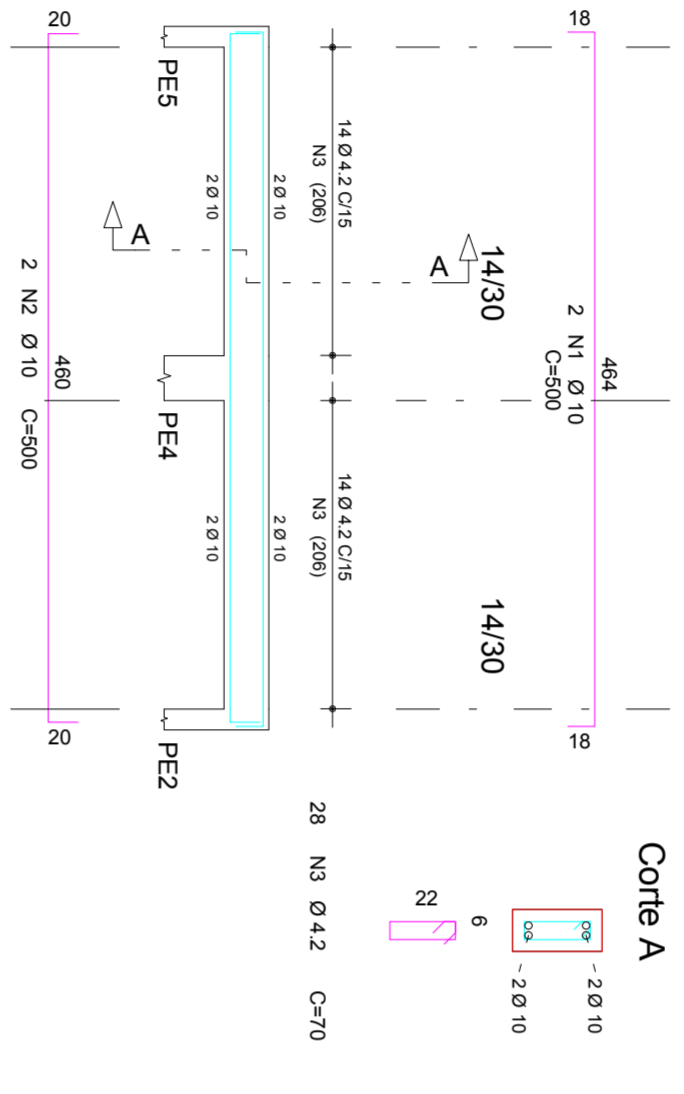
VF301



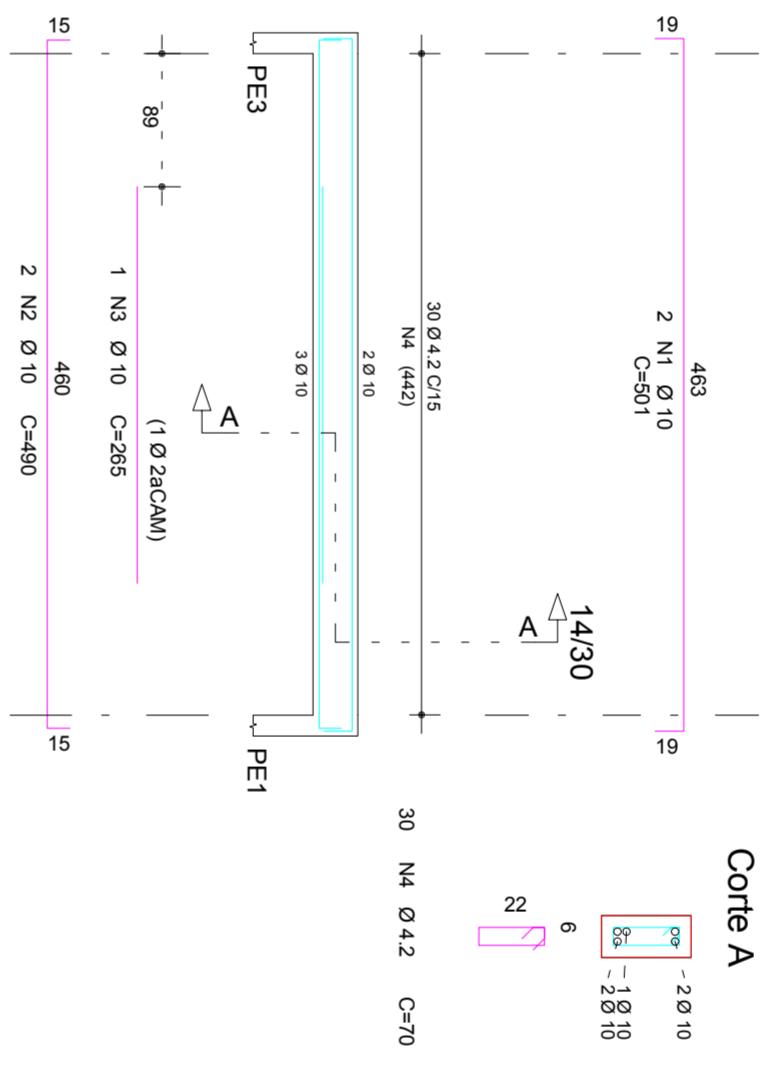
VE102



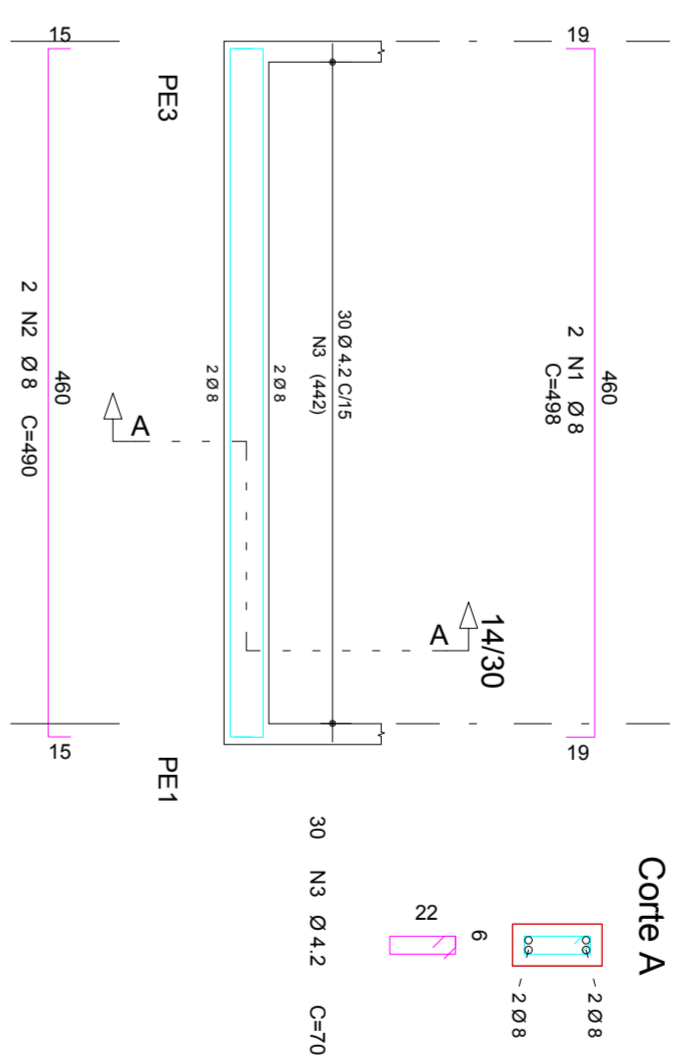
VE202



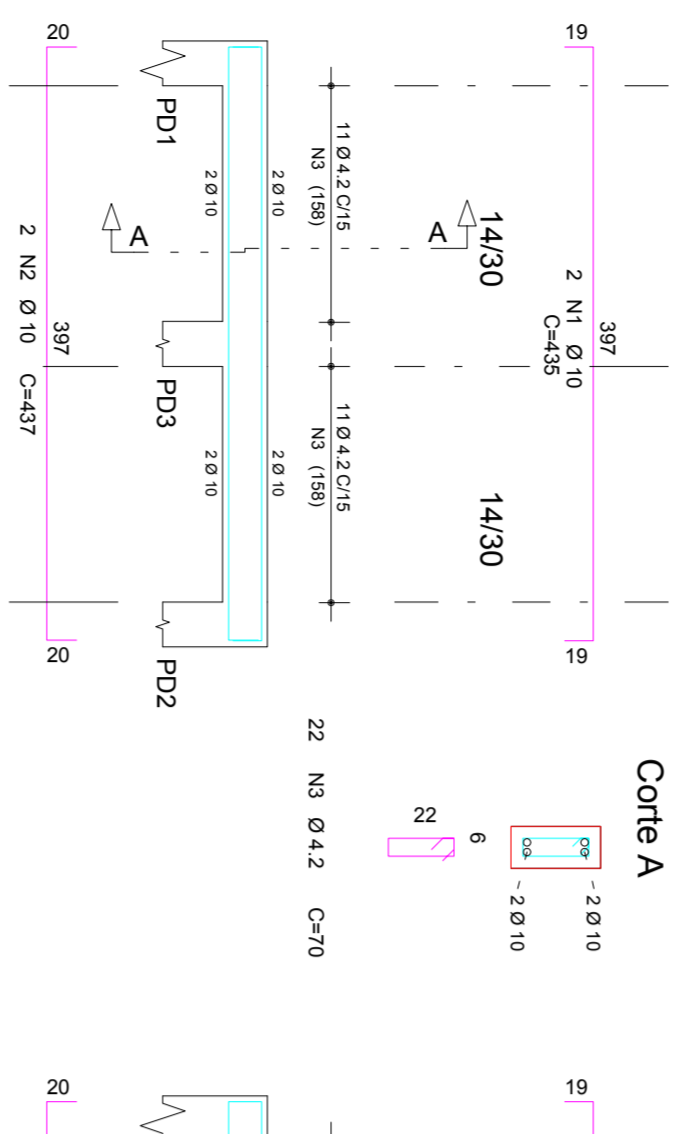
VE203



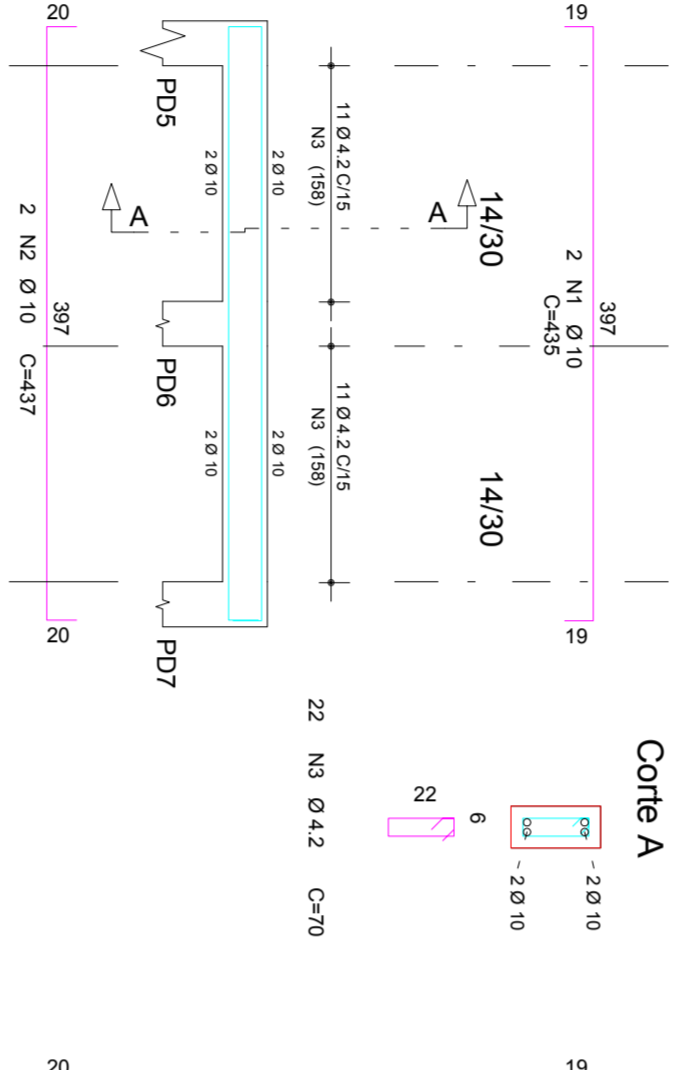
VE103



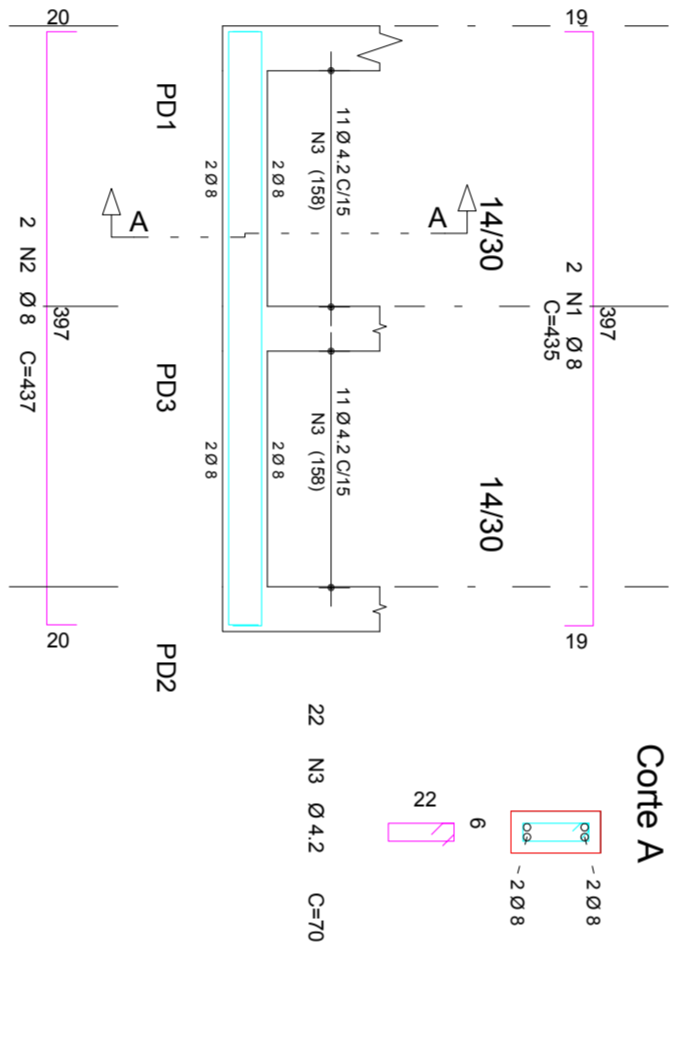
VD201



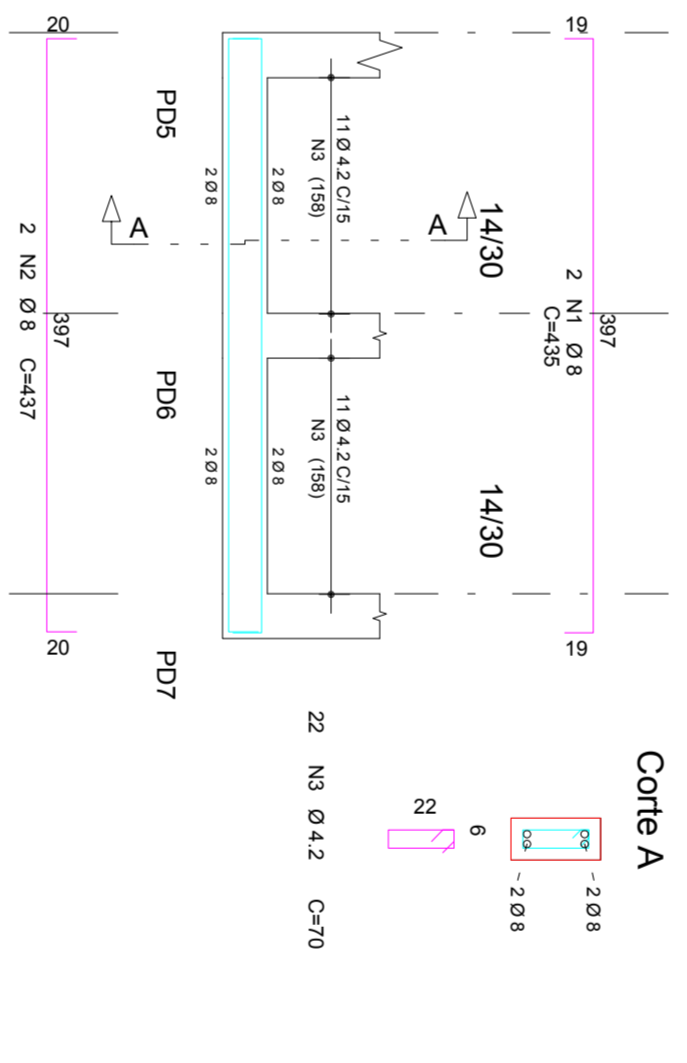
VD202



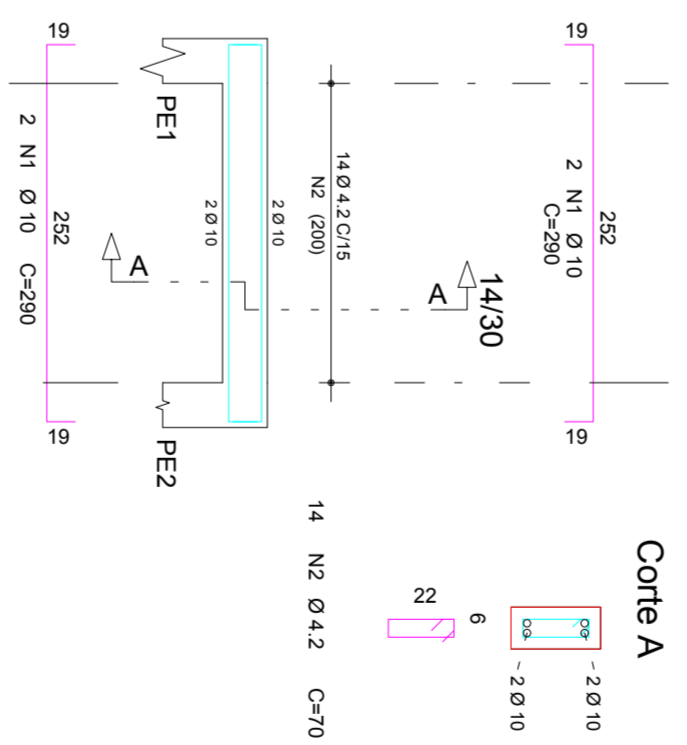
VD101



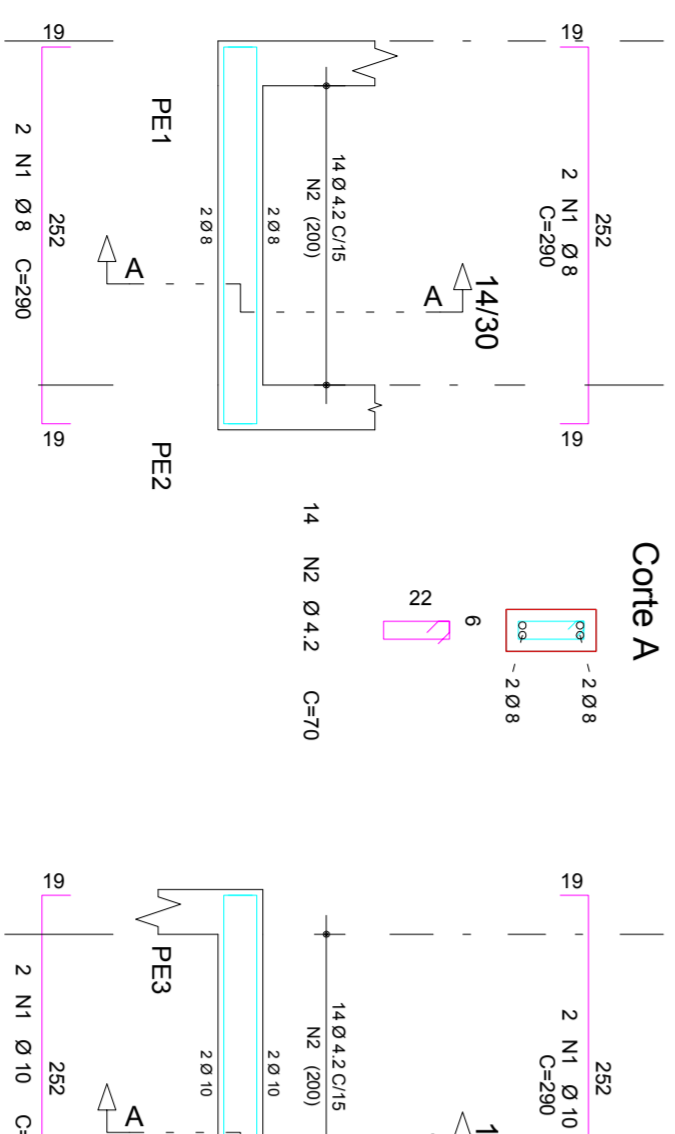
VD102



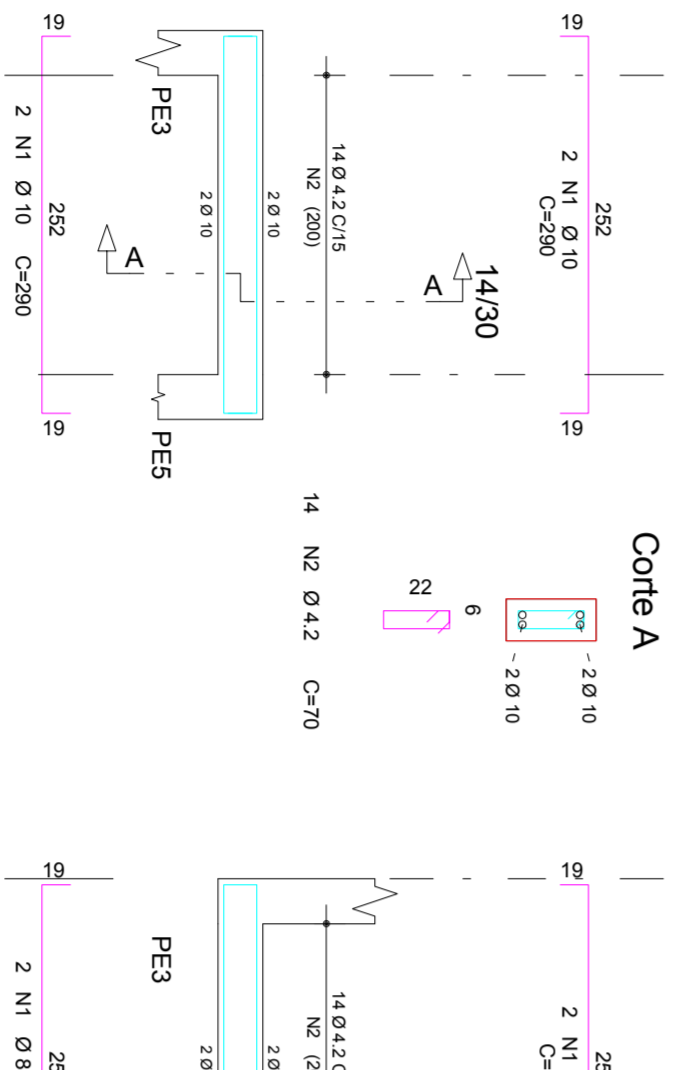
VE201



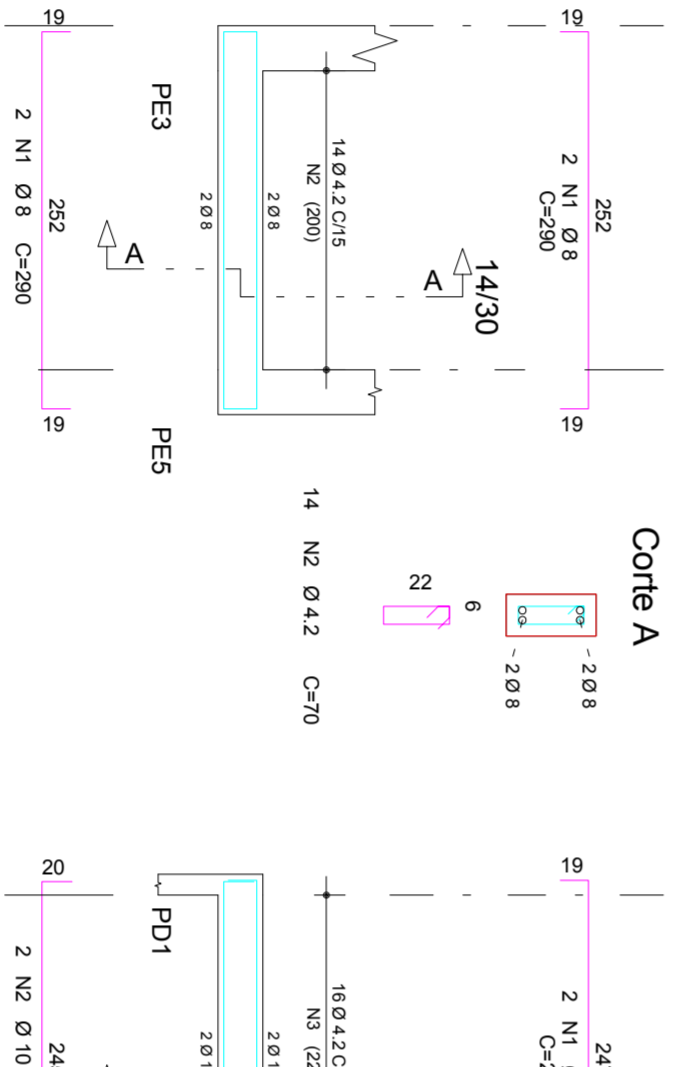
VE101



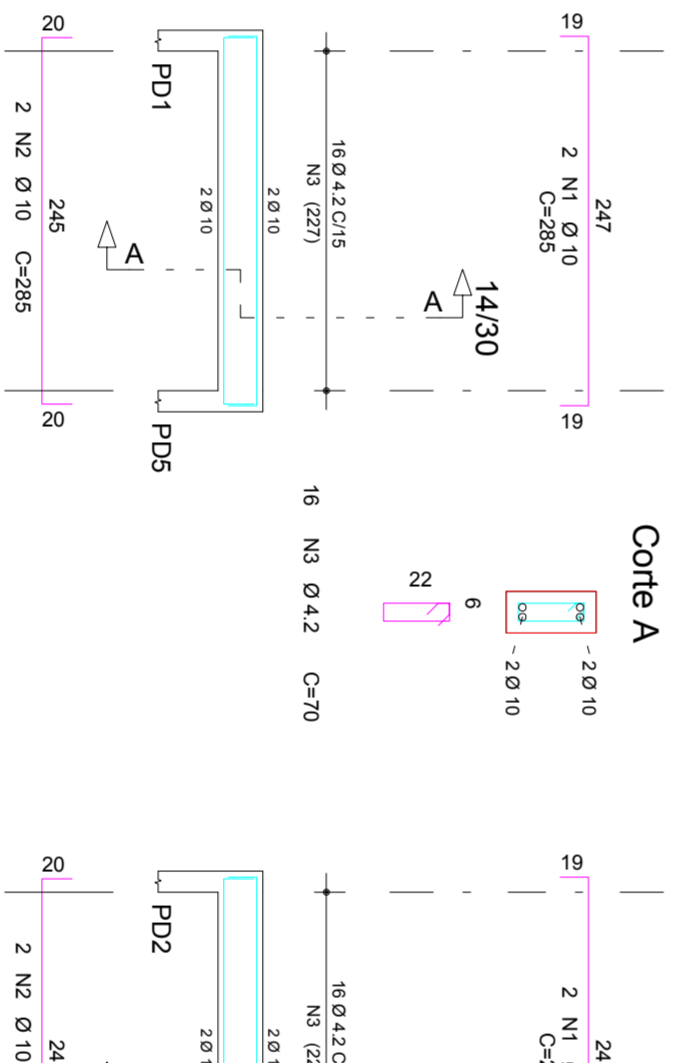
VE204



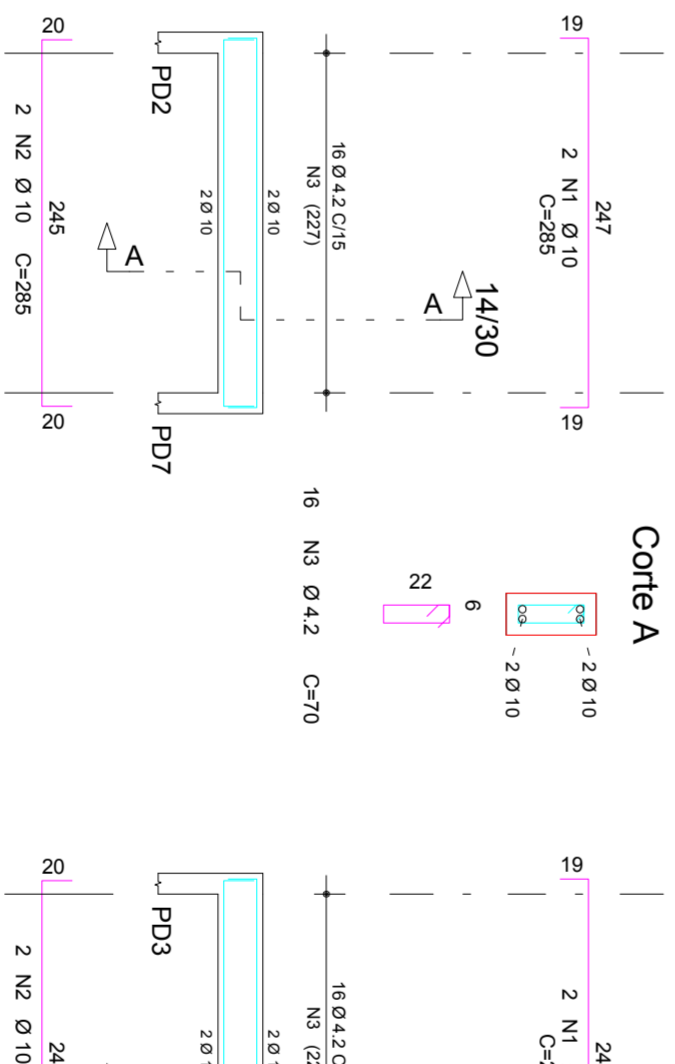
VE104



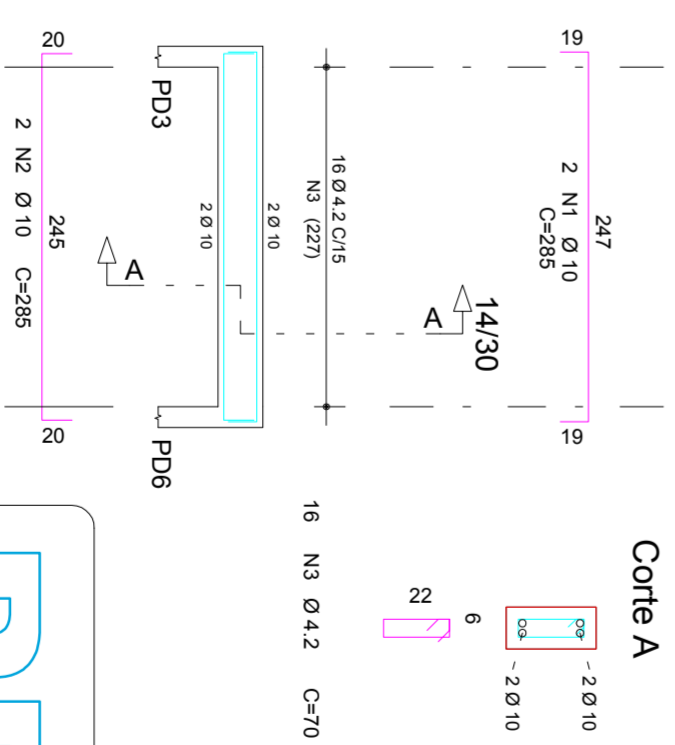
VD203



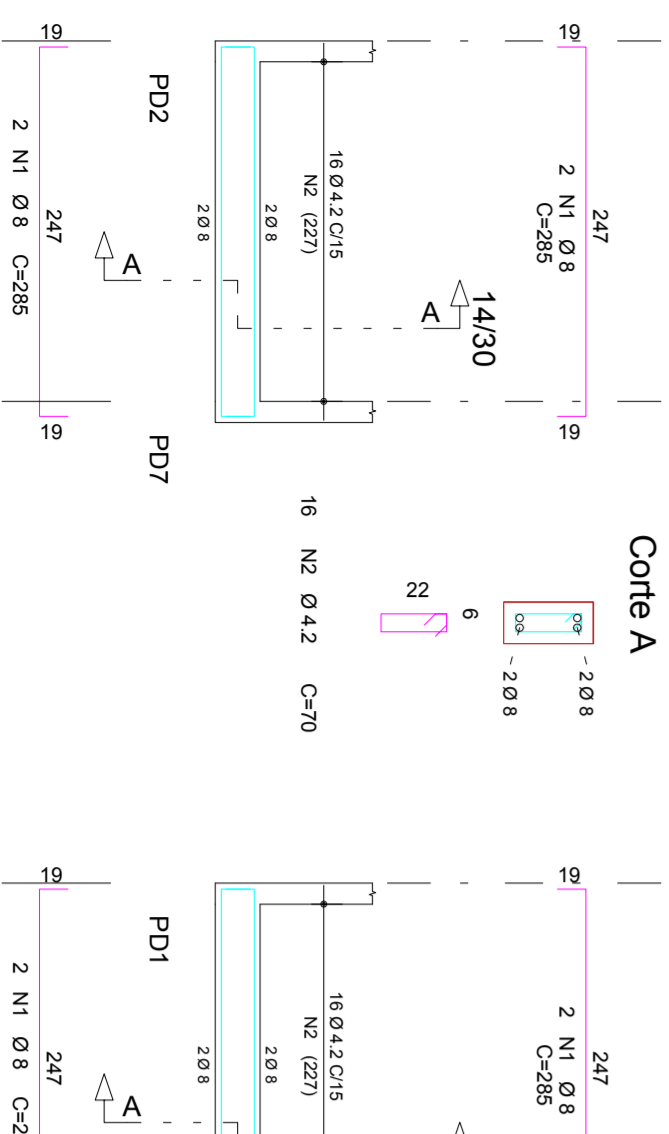
VD205



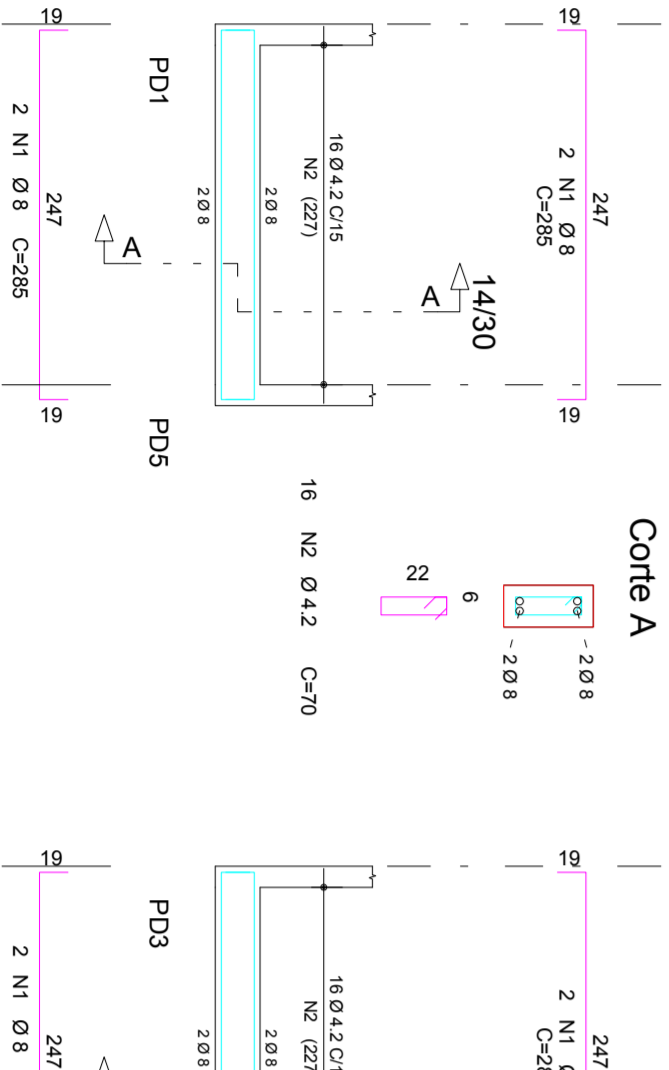
VD204



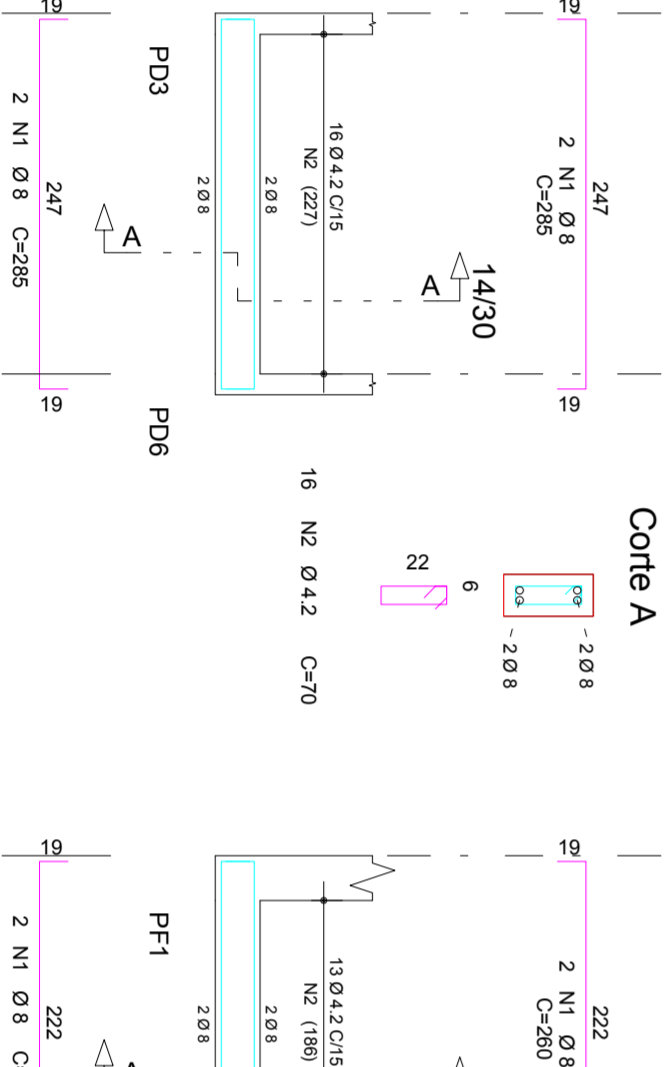
VD105



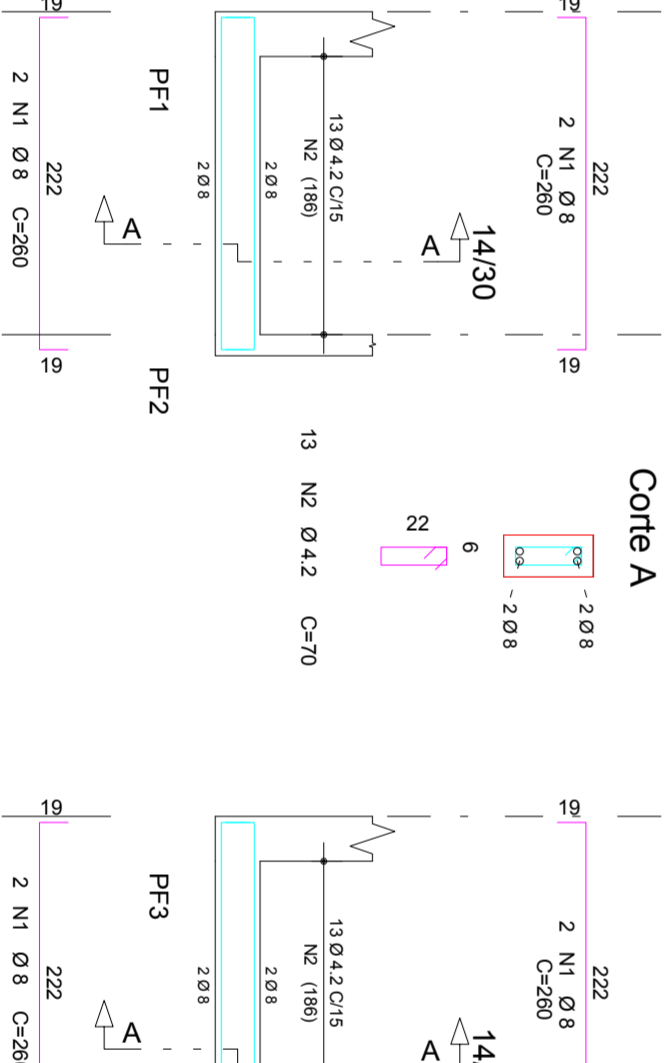
VD103



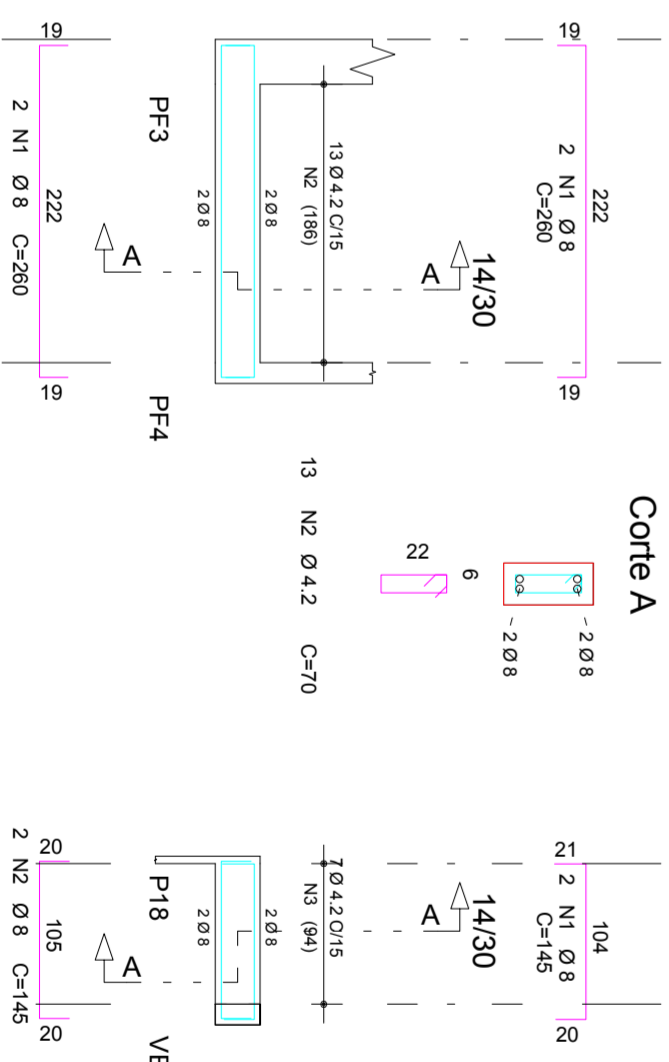
VD104



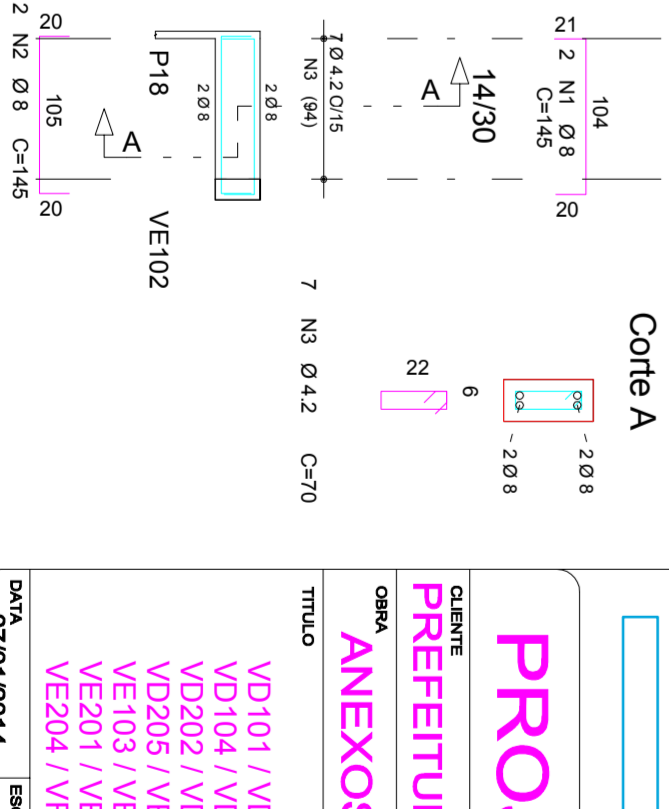
VF101



VF102



VE106

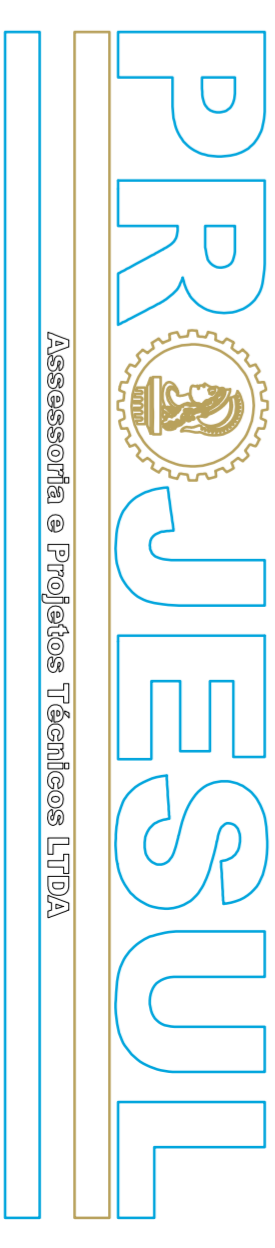


AÇO	POS	BIT	QUANT	COMPRIMENTO
		(mm)		UNIT

VD101	50A	1	8	2	435	870
	60B	3	4,2	22	70	1540
VD102	50A	1	8	2	435	870
	60B	2	4,2	22	70	1540
VD103	50A	1	8	2	435	870
	60B	1	4,2	16	70	1120
VD104	50A	1	8	2	435	870
	60B	2	4,2	22	70	1540
VD105	50A	1	8	2	435	870
	60B	2	4,2	22	70	1540
VE101	50A	1	8	2	435	870
	60B	2	4,2	22	70	1540
VE102	50A	1	8	2	435	870
	60B	3	4,2	28	70	1890
VE103	50A	1	8	2	435	870
	60B	3	4,2	30	70	2100
VE104	50A	1	8	2	435	870
	60B	2	4,2	14	70	1180
VE105	50A	1	8	2	435	870
	60B	3	4,2	7	70	980
VE106	50A	1	8	2	435	870
	60B	3	4,2	7	70	980
VE107	50A	1	8	2	435	870
	60B	3	4,2	7	70	980
VD201	50A	1	10	2	480	960
	60B	2	4,2	16	70	1120
VD202	50A	1	10	2	480	960
	60B	2	4,2	16	70	1120
VD203	50A	1	10	2	480	960
	60B	2	4,2	16	70	1120
VD204	50A	1	10	2	480	960
	60B	3	4,2	18	70	1260
VE201	50A	1	10	2	480	960
	60B	2	4,2	16	70	1120
VE202	50A	1	10	2	480	960
	60B	2	4,2	16	70	1120
VE203	50A	1	10	2	480	960
	60B	2	4,2	16	70	1120
VE204	50A	1	10	2	480	960
	60B	3	4,2	28	70	1960
VD205	50A	1	10	2	480	960
	60B	3	4,2	28	70	1960
VF201	50A	1	10	2	480	960
	60B	2	4,2	16	70	1120
VF202	50A	1	10	2	480	960
	60B	2	4,2	16	70	1120
VF203	50A	1	10	2	480	960
	60B	3	4,2	19	70	1330
VF301	50A	1	8	2	340	680
	60B	2	4,2	2	335	670
	60B	3	4,2	19	70	1330

RESUMO AÇO CA. 50-60	PESO
----------------------	------

AÇO	BIT	COMPR	PESO
60B	4,2	186	74
50A	8	182	102
50A	10	182	102
Peso Total 60B =			35 kg
Peso Total 50A =			176 kg



PROJETO ESTRUTURAL

ANEXOS UPA 24H MANTINHOS

CLIENTE	COM. N.º
PREFEITURA MUNICIPAL DE MANTINHOS	0001

CALCULADO POR	DATA
MARCEL CARVALHO FARINHA	07/01/2014

TÍTULO	REV. N.º
VD101 / VD102 / VD103 / VD104 / VD105 / VD201 / VD202 / VE101 / VE102 / VE103 / VE104 / VE105 / VE201 / VE202 / VE203 / VE204 / VE101 / VF102	51/53

DRAWING	REVISÃO
ENG MARCEL FARINHA	00