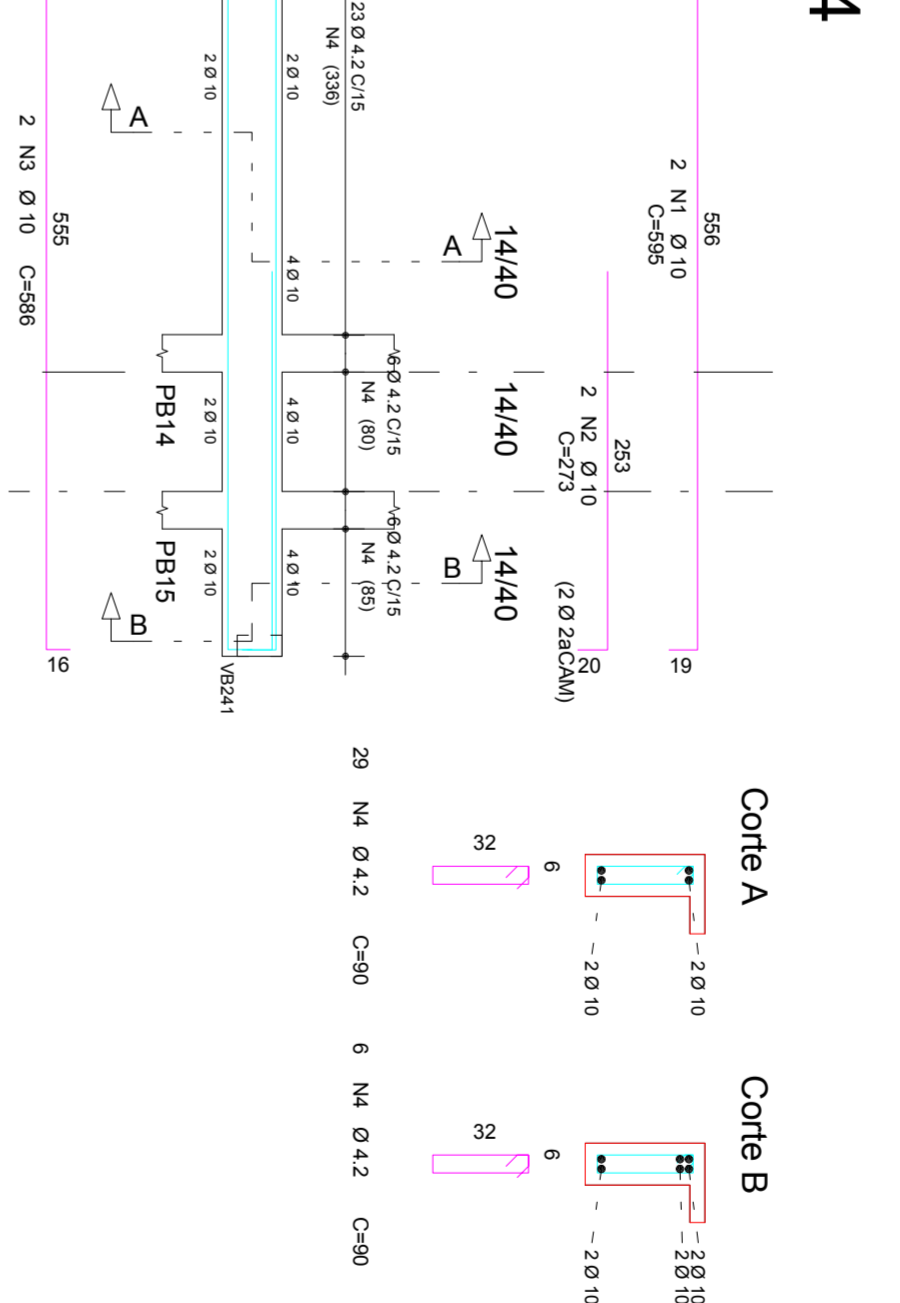
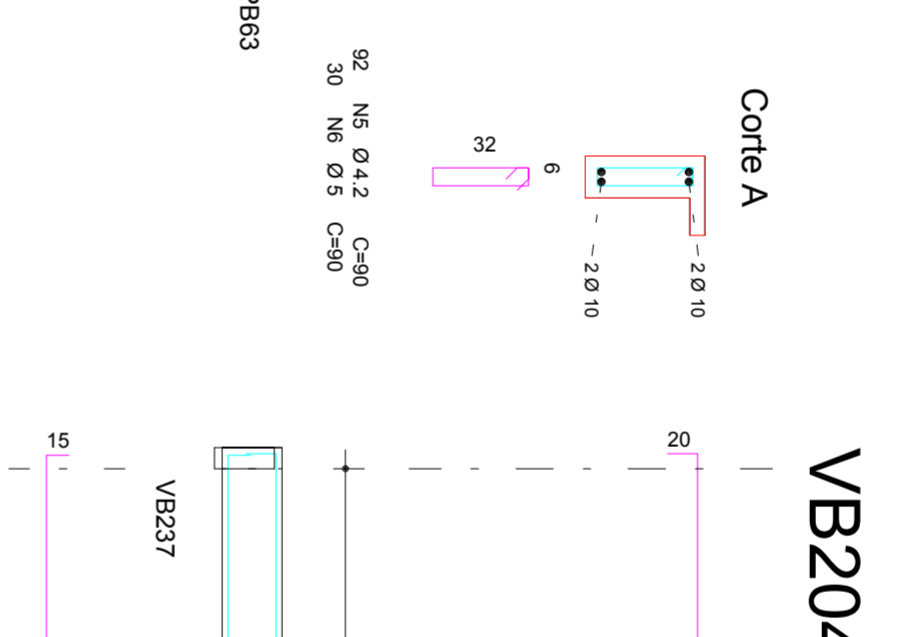
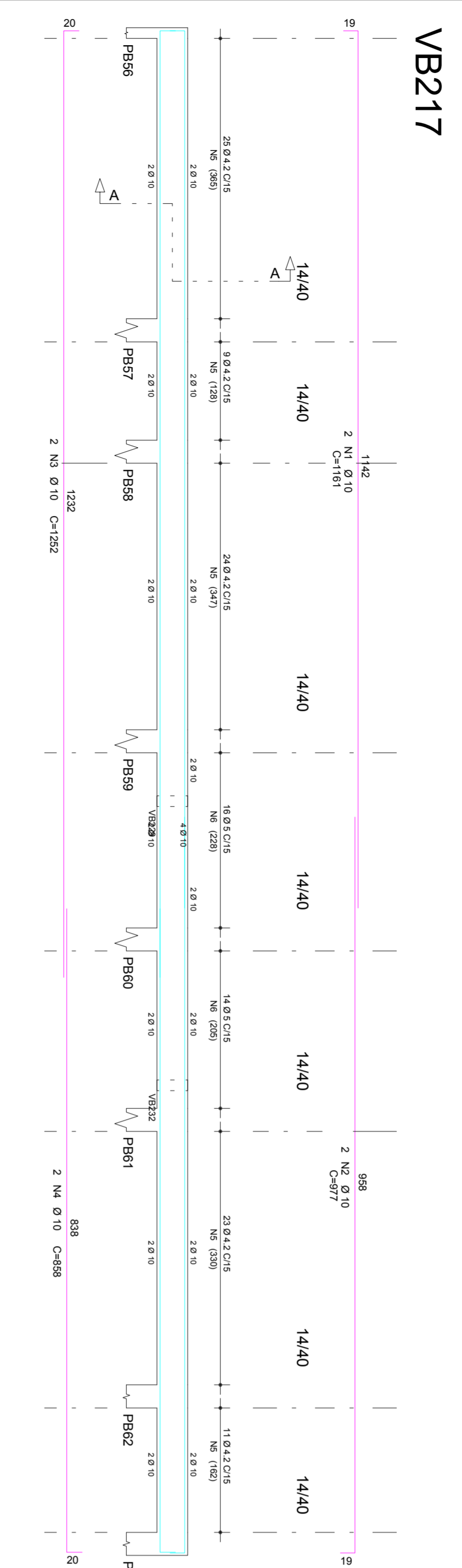
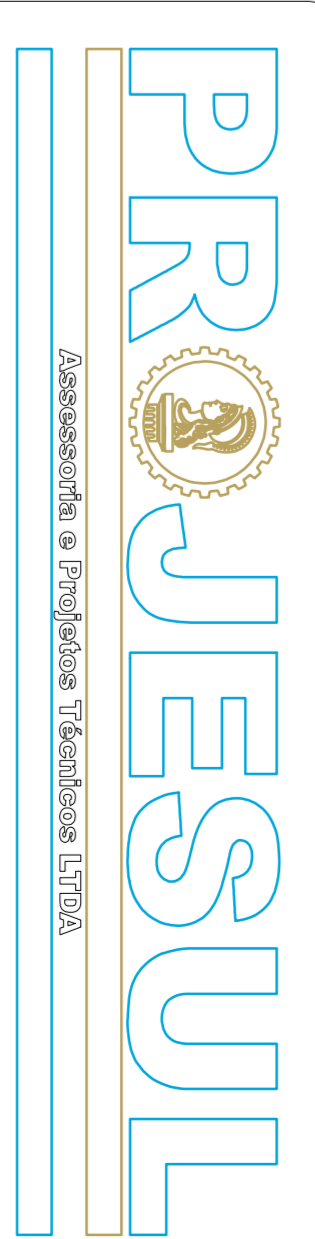
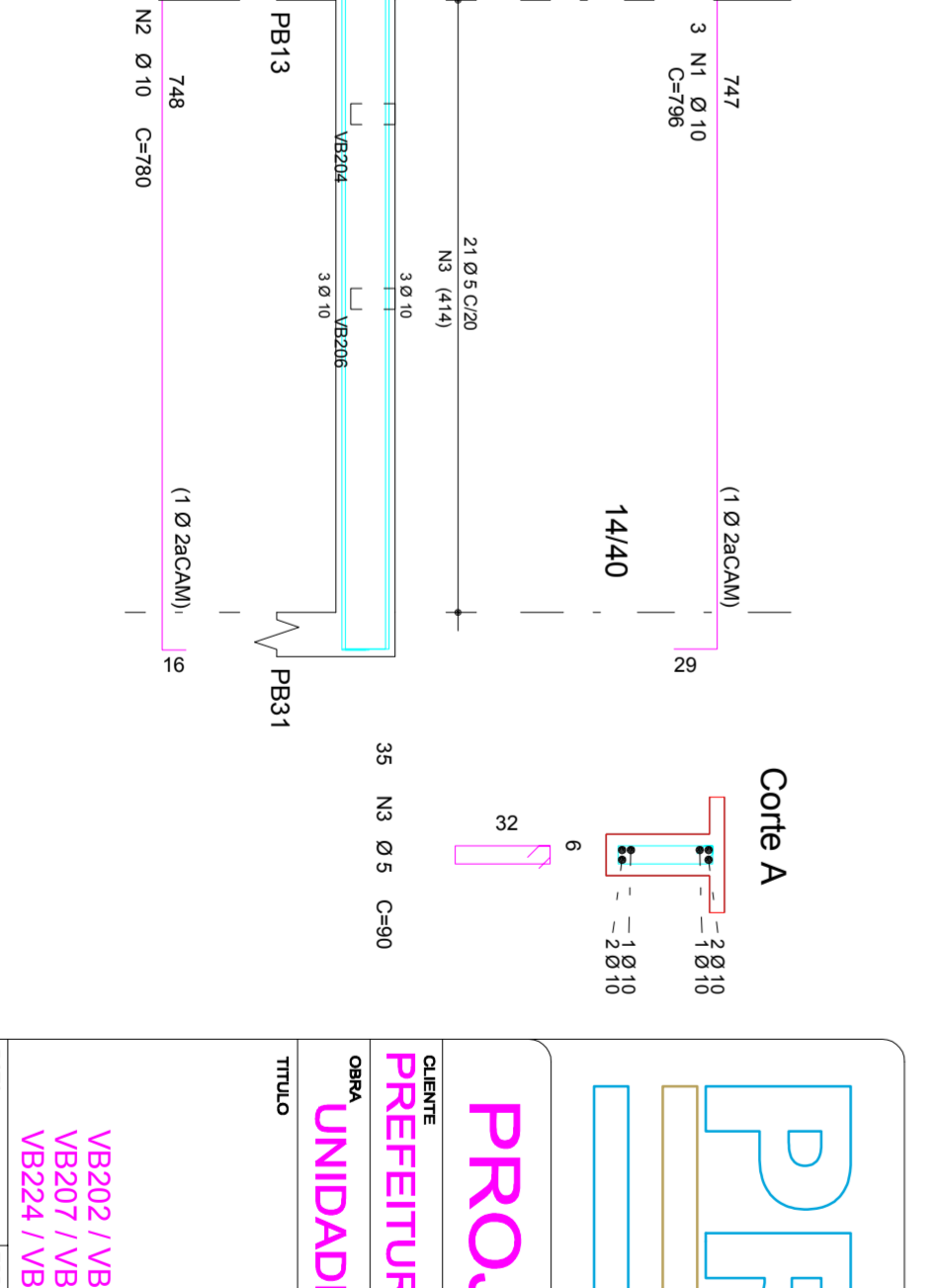
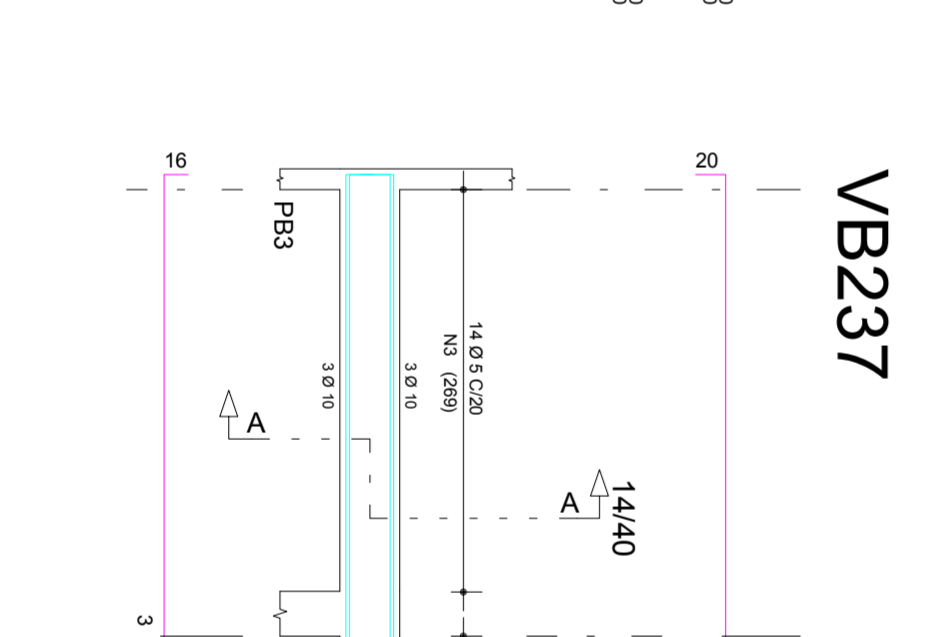
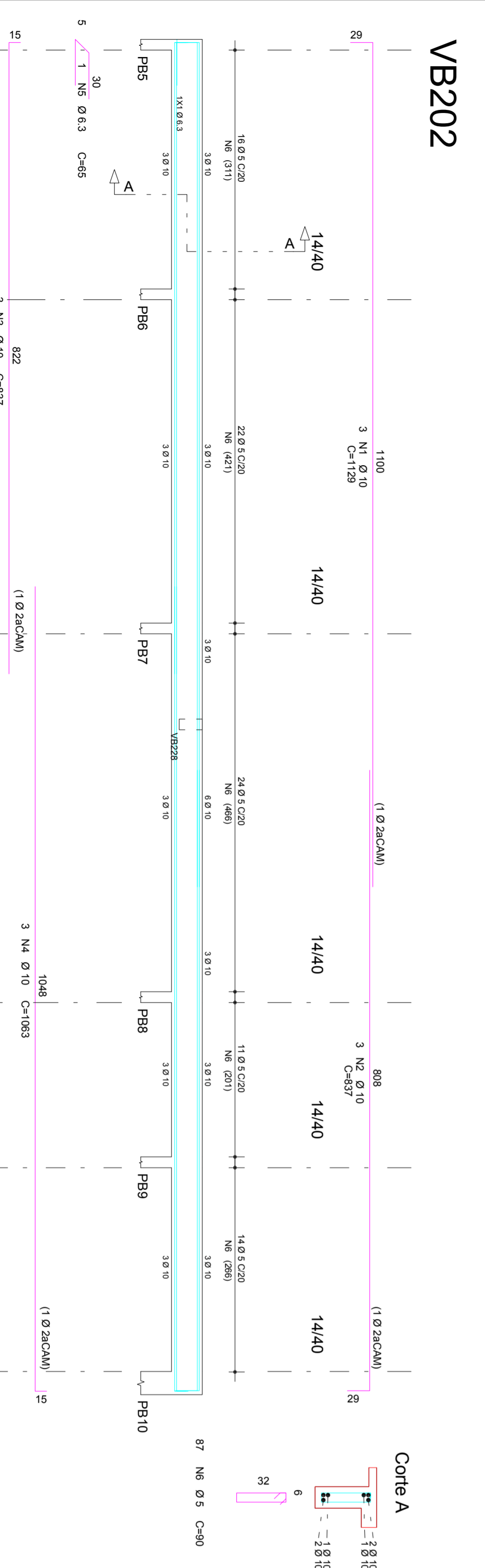
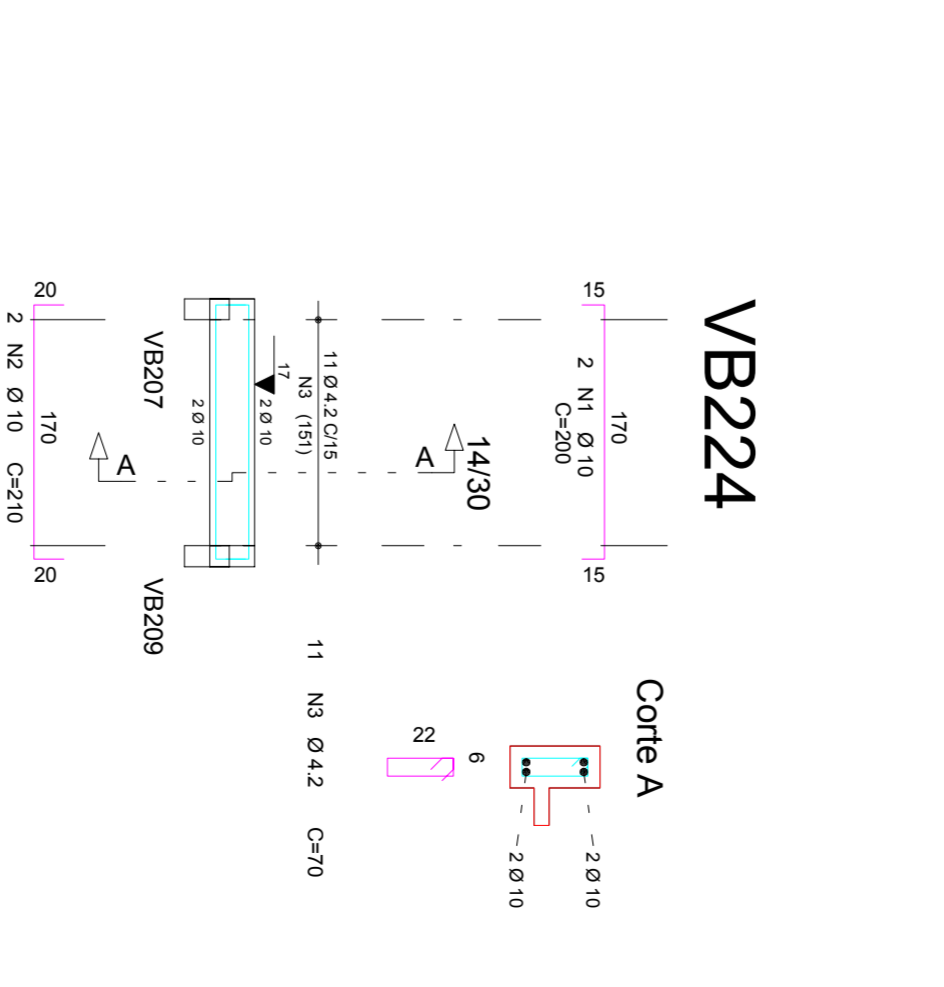
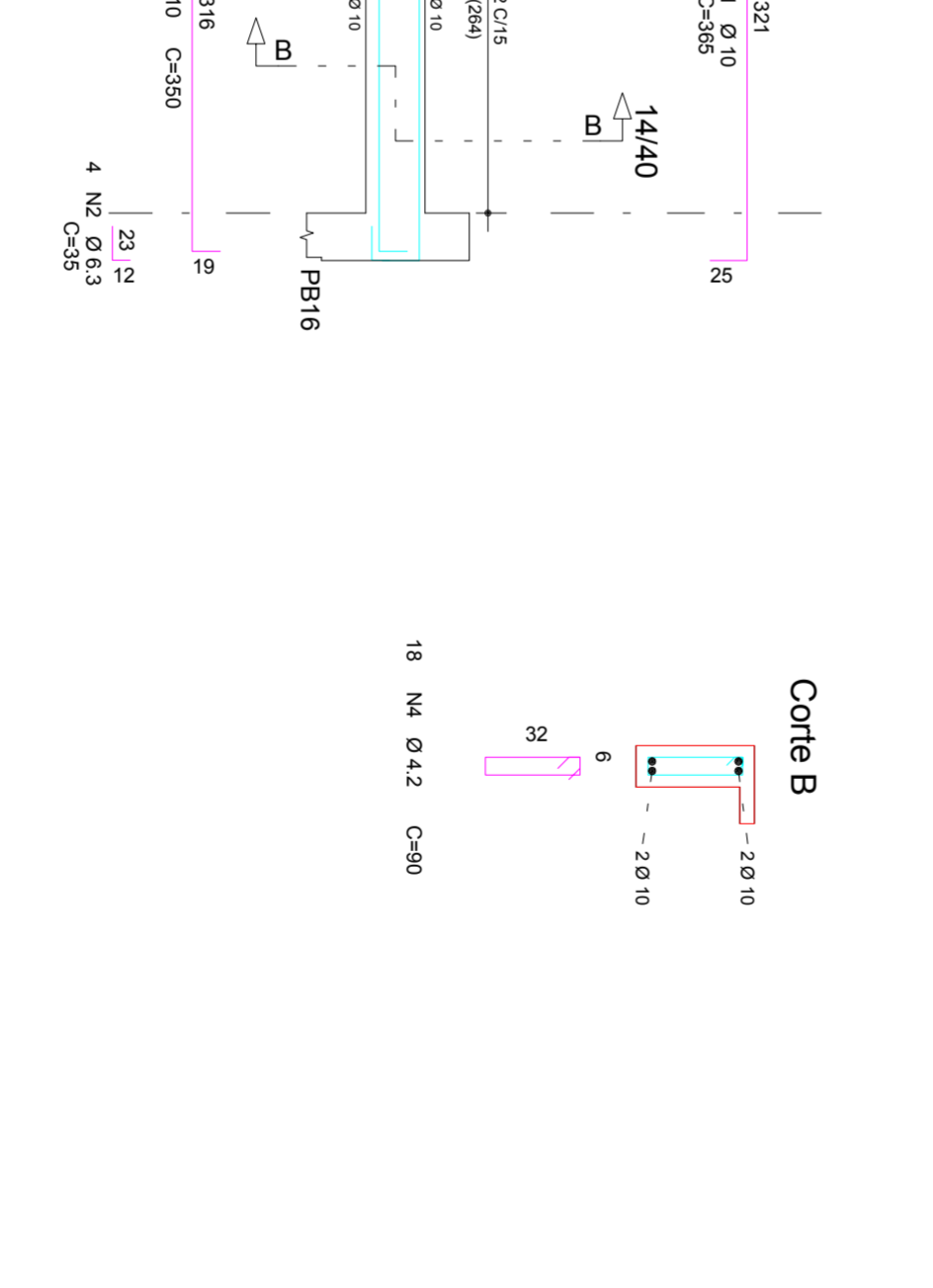
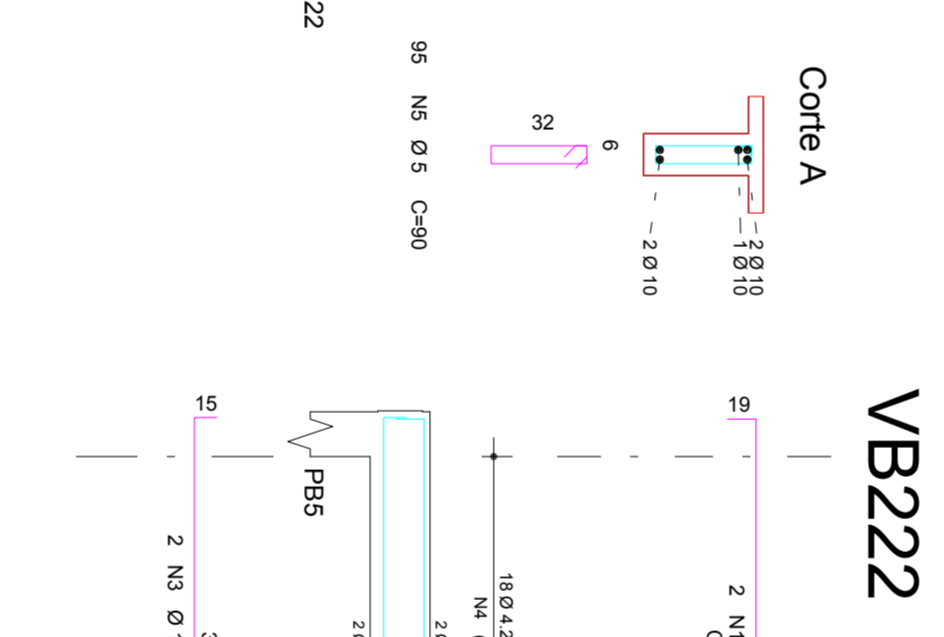
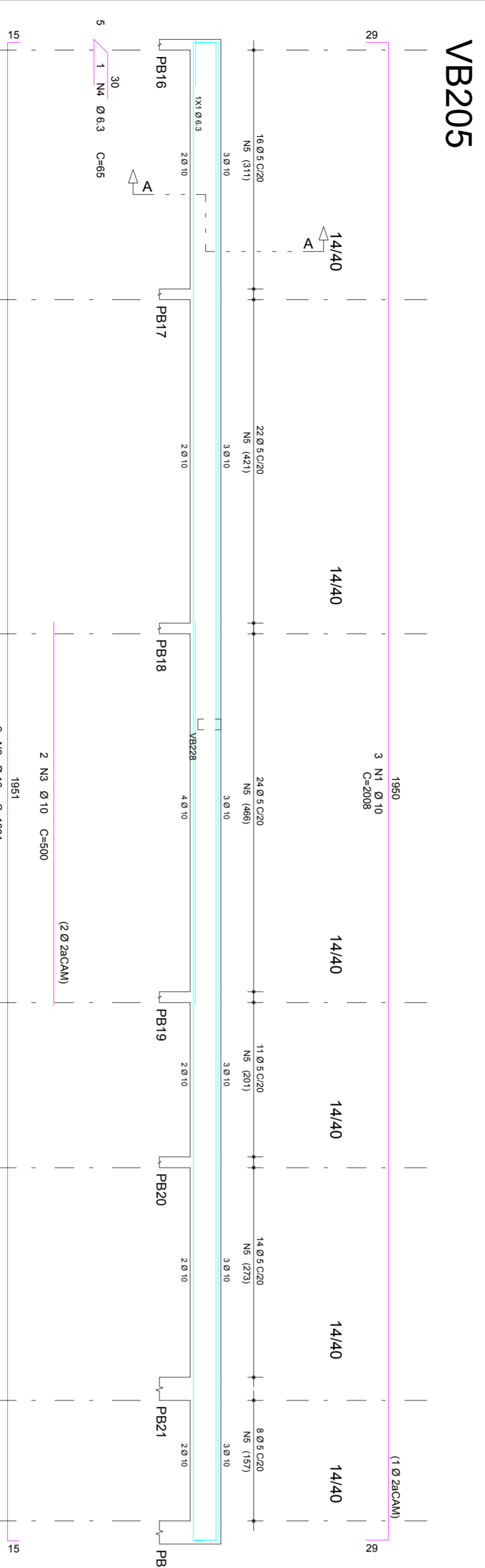


ACO	POS	BIT (mm)	QUANT	COMPLEMENTO
VB202	50A	1	10	1139
	50A	2	10	837
	50A	3	10	2511
	50A	4	10	3189
	60B	6	5	90
	60B	5	5	750
VB204	50A	1	10	595
	50A	2	10	546
	50A	3	10	273
	60B	2	4.2	266
	60B	4	4.2	350
	60B	2	35	1150
VB205	50A	1	10	2028
	50A	2	10	6024
	50A	3	10	3962
	50A	4	6.3	195
	60B	5	5	90
	60B	5	5	8550
VB207	50A	1	10	1835
	50A	2	10	5872
	50A	3	10	1936
	60B	2	4.2	119
	60B	4	4.2	830
VB217	50A	1	10	1161
	50A	2	10	2322
	50A	3	10	977
	50A	4	10	1252
	50A	5	10	1440
	60B	6	4.2	52
	60B	5	5	90
	60B	5	5	8280
	60B	6	5	30
	60B	5	5	90
VB222	50A	1	10	365
	50A	2	10	700
	50A	3	10	350
	60B	4	4.2	18
	60B	3	18	90
	60B	4	18	1820
VB224	50A	1	10	200
	50A	2	10	400
	60B	3	4.2	11
	60B	11	11	70
	60B	11	11	770
VB237	50A	1	10	796
	50A	2	10	780
	50A	3	5	35
	50A	3	5	388
	60B	80	80	1310
	60B	3	10	65
	60B	2	10	556
	60B	3	2	70
	60B	4.2	4.2	2590
VB240	50A	1	10	622
	50A	2	10	1244
	50A	3	10	655
	50A	2	10	1312
	60B	3	2	37
	60B	4.2	4.2	70
	60B	3	2	656
	60B	2	10	566
	60B	3	2	70
	60B	4.2	4.2	2590



ACO	POS	BIT (mm)	QUANT	COMPLEMENTO
VB202	50A	1	10	1139
	50A	2	10	837
	50A	3	10	2511
	50A	4	10	3189
	60B	6	5	90
	60B	5	5	750
VB204	50A	1	10	595
	50A	2	10	546
	50A	3	10	273
	60B	2	4.2	266
	60B	4	4.2	350
	60B	2	35	1150
VB205	50A	1	10	2028
	50A	2	10	6024
	50A	3	10	3962
	50A	4	6.3	195
	60B	5	5	90
	60B	5	5	8550
VB207	50A	1	10	1835
	50A	2	10	5872
	50A	3	10	1936
	60B	2	4.2	119
	60B	4	4.2	830
VB217	50A	1	10	1161
	50A	2	10	2322
	50A	3	10	977
	50A	4	10	1252
	50A	5	10	1440
	60B	6	4.2	52
	60B	5	5	90
	60B	5	5	8280
	60B	6	5	30
	60B	5	5	90
VB222	50A	1	10	365
	50A	2	10	700
	50A	3	10	350
	60B	4	4.2	18
	60B	3	18	90
	60B	4	18	1820
VB224	50A	1	10	200
	50A	2	10	400
	60B	3	4.2	11
	60B	11	11	70
	60B	11	11	770
VB237	50A	1	10	796
	50A	2	10	780
	50A	3	5	35
	50A	3	5	388
	60B	80	80	1310
	60B	3	10	65
	60B	2	10	556
	60B	3	2	70
	60B	4.2	4.2	2590
VB240	50A	1	10	622
	50A	2	10	1244
	50A	3	10	655
	50A	2	10	1312
	60B	3	2	37
	60B	4.2	4.2	70
	60B	3	2	656
	60B	2	10	566
	60B	3	2	70
	60B	4.2	4.2	2590

RESUMO AÇO CA 50-60	BIT (mm)	COMP	PESO (kg)
60B	4.2	247	27
50A	6.3	3	1
50A	10	533	385
Peso Total	60B =		62 kg
	50A =		336 kg



**PROJETO ESTRUTURAL**  
UNIDADE DE PRONTO ATENDIMENTO 24H

CLIENTE	PREFEITURA MUNICIPAL DE MATINHOS	ORÇÃO N.º	0001
OBJETO	UNIDADE DE PRONTO ATENDIMENTO 24H	DESL. N.º	
TÍTULO			
CALCULISTA	MARCEL ENGENHEIRO CIVIL CREA 179020-D-PR		
PROJETA	MARCEL ENGENHEIRO CIVIL CREA 179020-D-PR		
REVISOR	MARCEL ENGENHEIRO CIVIL CREA 179020-D-PR		
DATA	07/01/2014	REV. N.º	00
ESCALA			
FUNÇÃO	30MP/PA		
DIRETOR	ENG MARCEL FARINHA		